

Shire of Broome

Bali Hai Resort & Spa

Location: 6 Murray Road, Cable Beach

Telephone: (08) 9191 3100

Web: www.balihairesort.com

Accessible parking bay onsite: Two designated disabled parking bays and ample parking in resort car park adjacent to reception.

Drop off available: Yes.

Closest public transport: Town bus stop on Cable Beach at Divers Tavern, approx. 7min to the resort.

Accessible public toilet onsite: Yes.

Accessible parking: 24 hour

Pick up / set down bay: Vehicle drop off is on Murray Street in front of the resort.

External access: Barrier free pedestrian boardwalk 1100mm wide with handrails of 1000mm high on either side. The boardwalk has 3.7gradient (1.15) wheelchair access (Y).

Main entrance: is open 1800mm wide and leads to the foyer, which has very good wheelchair circulation area (Y++).

Foyer: A spacious area with ample circulation and wooden floorboards. There is lounge and chair seating provided with cushion and firm back and armrests. The seating height is 530mm.

Reception: It has a two-part counter at sitting heights and standing heights. Information brochures are accessible at both heights.

Signage: Visible from road.

Information: Printed information in sitting heights.

Accessible public toilet: No

Accessible rooms: There are two accessible rooms within the complex, which are on ground level and adjoining and can be opened up to one big room, if required.

Access to rooms: The access is via a wide brick paved pathway of 1150mm that has a short ramp gradient of 6.3 degrees (1.10). It leads to a level entry to the room. Wheelchair access is (Y++).

Accessible rooms:

Door: The double swing door is 1460mm wide with a lever handle. It has a key entry that is light to open and easy to close. An emergency map is located on the back of one of the doors. The spacious rooms are in open plan design and with kitchenette, lounge, bedroom and bathroom, with floors tiled throughout. Wheelchair access is (Y++).

Tea and coffee: The workbenches of the kitchenette are at sitting heights with a 1200mm aisle in between.

Lounge: The lounge area is separated from the bedroom area by a low wall with an 1170mm wide open access entry. The lounge area has sufficient circulation space for all types of

wheelchair (Y++). There is a two seat cushioned sofa, firm and comfortable and with armrests and backrest. The sitting heights is 430mm.

Bed: The bed is firm and 690mm high. There is 1300mm circulation space on either side of the bed and 310mm clearance under the bed. The light switches are on either side of the bed and easy to be reached.

Patio: Adjacent to the room is a patio with BBQ, tables and chairs, provided for each of the rooms.

Bathroom:

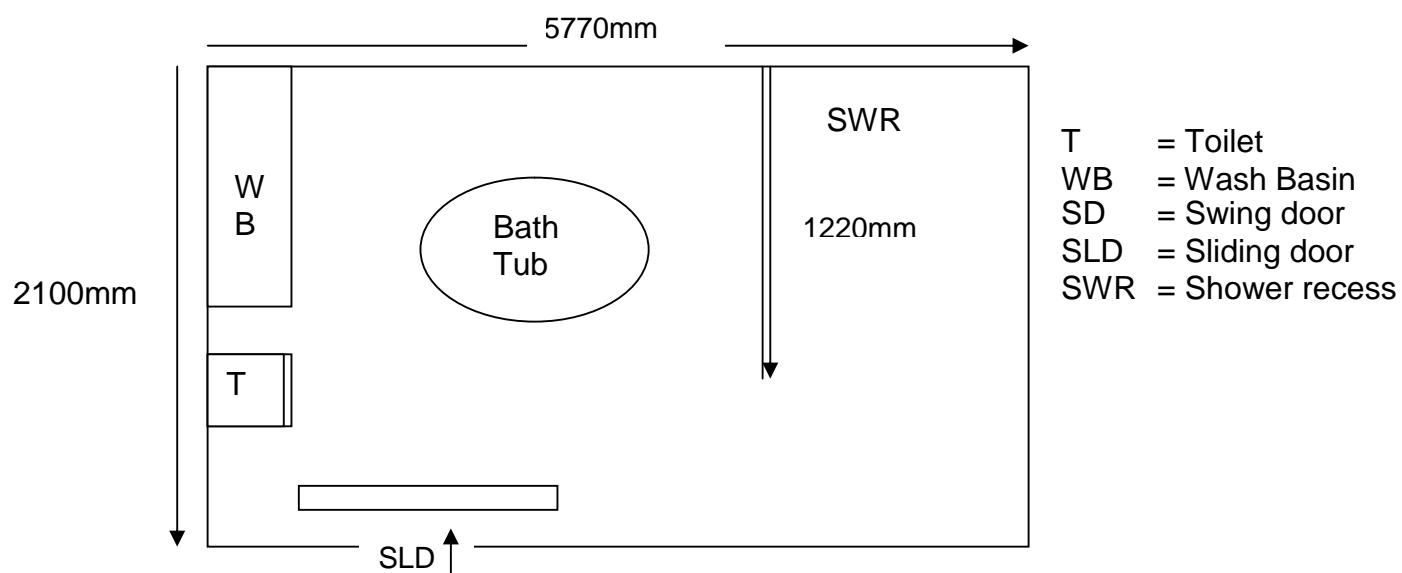
Door: Is wide with 2300mm entry with double wooden sliding doors that are light to open and easy to close. There is sufficient wheelchair access to all facilities (Y++). The floor is tiled and level throughout.

Pan height: 490mm.

Basin height: 830mm.

Shower: The recess area is 1680mm x 2100m with fold down seat and an open entry space of 880mm. The spacious bath has grab rails at either end.

Emergency call button: No





Room facilities:

- TV with remote control
- Remote controlled air conditioning

Pool:

Location: The pool is open air and in the middle of the complex. The pathways leading to the door is 1150mm wide with two entry points.

Door: The entrance gates are 950mm wide with ample wheelchair clearance (Y++). The gates have a lift knob height of 1700mm and are light to open and with an automatic closer.

Style: The pool is a 'roman bath' style and access into the pool is via 4 wide steps. The pool has both, a heating and a cooling system and sailcloth overhead provides shade. The pool also incorporates a spa that has a push button activation system. There is a gazebo within the pool area with a table bench, with good knee clearance, and bucket seats of 500mm sitting heights. There are movable banana style lounges available. Wheelchairs would have good access to most of the pool area depending on the position of the lounges.

Guest Laundry: Located on level two. A small wheelchair could gain access to the laundry through two heavy doors, across a stair landing. Doors are 860mm wide. The laundry has good internal circulation space, two top loading washing machines and two front loading, floor mounted, driers. No payment required.

Information collected by:

Shire of Broome August 2007

Care has been taken to ensure the accuracy of this information however no guarantee is given that the facility is fully accessible.

Please advise the Shire of Broome of any access changes since publication.

'You're Welcome WA Access Initiative' © Disability Services Commission 2007



The **You're Welcome WA Access Initiative** was developed by the Disability Services Commission in partnership with the Western Australian Local Government Association, Ministerial Advisory Council on Disability, People with Disabilities (WA) Inc, Tourism Western Australia, ACROD WA, NICAN WA and the City of Perth.