

Beaches of Broome

Location: 4 Sanctuary Road, Cable Beach

Telephone: (08) 9192 6665 or Freecall 1300 881031

Web: www.beachesofbroome.com.au

Accessible parking bay onsite: Yes, there is one designated disabled parking bay located at entrance to the foyer.

Closest public transport: Near the backpacker on Sanctuary Drive

Accessible public toilet onsite: There is an accessible toilet in each of the male and female toilet block that is situated between the swimming pool area and the refectory.

External Access: A wide 2200mm barrier free level path leads to the toilet block.

Entry door: It's an 800mm wide swing door with a 'D' handle. The door is heavy to open and slow to close. There is an external clearance of 490mm on the latch side and 1560mm clearance on the inside of the toilet block. Wheelchair access is (Y++).

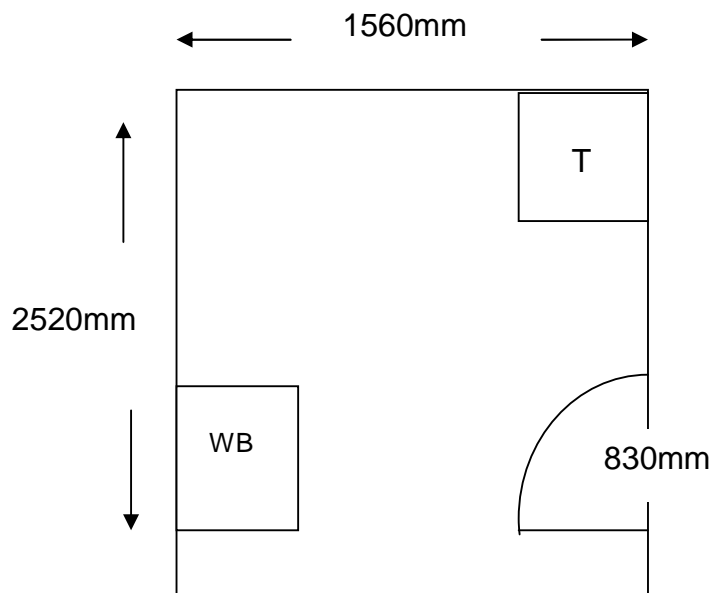
Toilet cubicle door: The male and female cubicles are identical. The door is 830mm wide working with push action. The door is light to open and easy to close. There is an internal clearance of 700mm on the internal latch side.

Toilet pan: 480mm

Wash basin: is 780mm height with knee clearance.

Lighting: Lighting is on at all times.

T = Toilet
WB = Wash Basin
SD = Swing door
SLD = Sliding door
SWR = Shower recess





Pick up / set down bay: 2 clearly marked parking bays at reception area.

External access: The access to the foyer is a brick tiled pathway 1200 wide with ramp gradient of 5.7degrees and a wheelchair access of (Y+).

Main entrance: The Level access open entry is 10 meters wide.

Foyer: Spacious foyer tiled floor with ample circulation space for any type of wheelchairs. There are 6 seats in the foyer, which are firm with arm- and backrest and sitting heights of 450mm.

Reception: The counter is at standing height.

Refectory: It is located adjacent to the foyer and reception area in an alfresco style. The tables and chairs are movable and firm and have backs and armrests with 450mm seat height. The tables are square with a central pedestal and good knee clearance. Access is barrier free and there is approx. 800mm aisle distance between the rows of tables and chairs. Wheelchair access is possible but circulation would be restricted.

Communal kitchen: The self-catering communal kitchen is situated to the left of the dining area. The kitchen has a swing door that is light to open and easy to close and 800mm wide. The kitchen area is spacious and modern clearance. The bench tops and stoves are at sitting heights. Wheelchair circulation between benches is good (Y+).

Signage: Good coloured contrast and easy to read from road.

Accessible rooms: There are 12 accessible non-smoking rooms located at ground floor level.

Corridors to rooms: Access to the rooms is via 2200mm wide outdoor pathways (Y++). The entrance to the rooms is level.

Accessible rooms:

Door: A key opens the glass sliding door. The door is heavy to open and slow to close. The door has a 'D' handle. The door is 740mm wide and has an internal clearance of 1360mm on the latch side. There is sufficient circulation space within the room, with the flooring being vinyl.

Tea and coffee: Facilities are located on a cabinet of 800mm heights.

Lounge: The small lounge area has tub style chairs with armrests and a seat height of 500mm. The light switches are at sitting heights.

Bed: The firm bed is 600mm high with a 300mm clearance. There is sufficient (1100mm) space between each side of the double bed.

Bathroom:

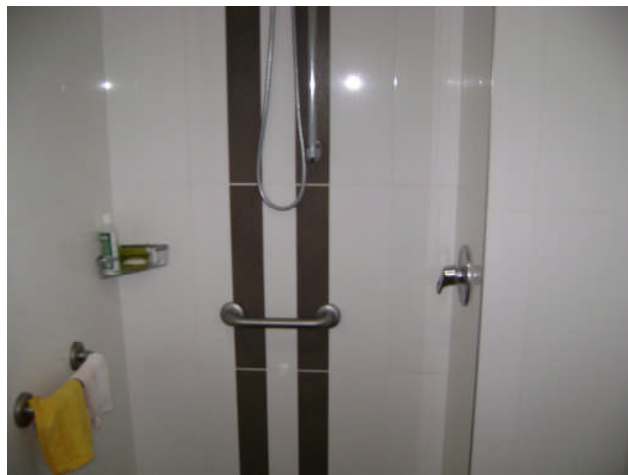
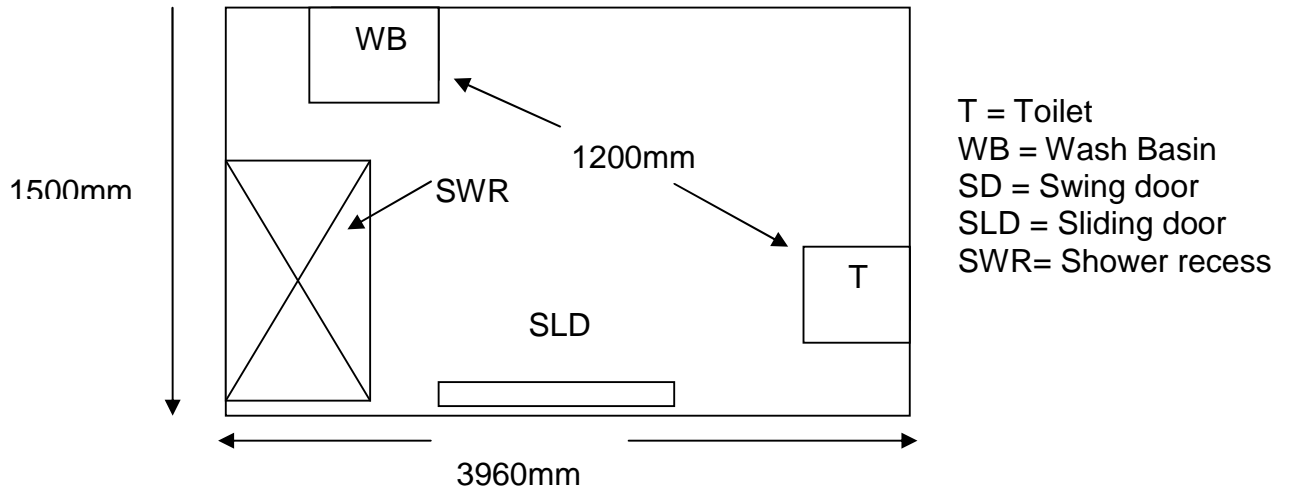
Door: 1300mm wide sliding door that is light to open and easy to close. The door has indent handles and a large snib. The lighting is automatic and the bathroom is tiled and levelled throughout.

Pan height: 500mm high.

Basin height: 820mm.

Shower facility: Shower recess is open and measures 1030mm x 420mm.

Emergency call buttons: No.



Room facilities:

- Overhead TV with remote control
- Air-conditioning with remote control

Pool:

The outdoor pool is located at ground level and is open 6am – 6pm. The 1000mm wide access gate has a high 1600mm knob with a lift up action. There is a 300mm wide clearance either side of the latch side.

The entry to the pool area is via a large shaded gazebo. There is a step down lip of 180mm to access the immediate surrounding of the area of the pool. The gazebo houses 4 pedestal tables with 4 chairs to each table. The tables and chairs are movable and wheelchair circulation is ample between the tables. The chairs are firm with backs and armrests with a seat height of 450mm. Tables have good knee clearance.

The pool is a roman bath style with level access into the pool. There are two entry points into the area, which each having four wide steps. Timber decking surrounds the pool area and wheelchairs can access most areas.

Guest Laundry: The laundry door is 800mm wide and is kept open. There is a small lip of 50mm at the entrance. The laundry has a 1200mm of internal circulation space. There are 4 coin operated top loading washing machines and two dryers.

Information collected by:

Shire of Broome August 2007

Care has been taken to ensure the accuracy of this information however no guarantee is given that the facility is fully accessible.

Please advise the Shire of Broome of any access changes since publication.

'You're Welcome WA Access Initiative' © Disability Services Commission 2007



The **You're Welcome WA Access Initiative** was developed by the Disability Services Commission in partnership with the Western Australian Local Government Association, Ministerial Advisory Council on Disability, People with Disabilities (WA) Inc, Tourism Western Australia, ACROD WA, NICAN WA and the City of Perth.