

Shire of Broome

## **Broome Boulevard Shopping Centre**

**Location:** Frederick Street, Broome

**Opening hours:**

Woolworths	Monday – Sunday	7.00am – 9.00pm
Liquor store	Monday – Saturday	11.00am – 8.00pm
Speciality Stores	Monday – Saturday	*8.00am – 5.00pm

\*some opening times may vary and some stores open Sunday

**Telephone:** (08) 9192 3939

**Closest accessible parking:** There are 8 designated disabled parking bays available and another 4 at the side entrance and 4 at the main entrance.

**Closest public transport:** The Broome Town Bus Service drops off and picks up all year round. The undercover bus shelter has a wooden bench with back support and a seat height of 450mm.

**Closest pick up / set down bay:** There are undercover bays directly in front of the main entrance, side entrance and the liquor store.

**Closest accessible toilet:** Onsite.

**Signage:** The signage is clear and easy to read from roadway.

**External Access:**

Main Entrance: A short low ramp with a gradient of 1.16 degrees enables to access the barrier free pedestrian area. Three metal bollards 1250mm apart from each other lead to an automatic double door more than 4000mm wide. Wheelchair access (Y++).

External Facilities: There is a wide undercover pathway leading to all external facilities (e.g. Liquor store, ATMs, post office boxes, the side entrance etc.).

**Internal:** Both entrances have wide automatic doors that lead to wide generally unobstructed pedestrian walkways. These lead to a central mall area. The centre is air-conditioned and brightly lit with tiled flooring throughout. There is level access into all shops and services. Wheelchair access (Y++).

**Seating:** There are wooden benches with arm- and backrests throughout the mall with a seating height of 390mm.

**Accessible toilets:** There is a designated disabled unisex toilet situated in the main pathway of the mall behind the Boulevard Café. It can be reached via a service corridor that is 1500mm wide and barrier free.

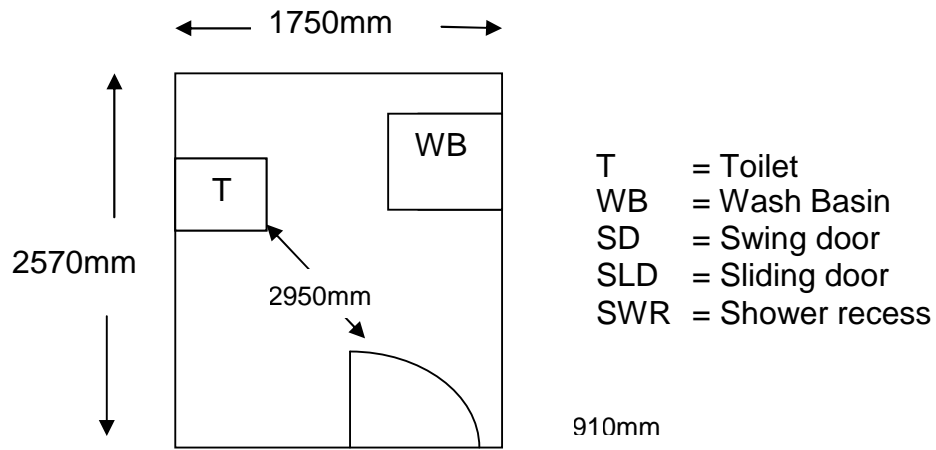
Entry door: It is a 910mm wide swing door which is light to open and fast to close. The door opens inwards with a push action.

Internal Access: The door closes automatically and has a 'D' handle with a small snib. The clearance on the latch side is 1200mm.

Pan height: 410mm with grab rails.

Basin height: 810mm with lever action tap.

Lighting: is on at all times.



Information collected by:

Shire of Broome August 2007

Care has been taken to ensure the accuracy of this information however no guarantee is given that the facility is fully accessible.

Please advise the Shire of Broome of any access changes since publication.

'You're Welcome WA Access Initiative' © Disability Services Commission 2007



The **You're Welcome WA Access Initiative** was developed by the Disability Services Commission in partnership with the Western Australian Local Government Association, Ministerial Advisory Council on Disability, People with Disabilities (WA) Inc, Tourism Western Australia, ACROD WA, NICAN WA and the City of Perth.