

Shire of Broome

Broome Historical Society Museum

Location: 67 Robinson Street, Broome

Opening hours: 10.00am to 4.00pm June – October
10.00am to 1.00pm November - May

Cost: \$5

Telephone: (08) 9192 0775

Web: No.

Closest accessible parking: One designated disabled parking bay at the entrance

Pick up / set down bay: No.

Closest public transport: Town Bus stop about 2 minutes

Accessible toilet: Yes.

Food outlet on-site: No.

External access: A pedestrian ramp with (1.15) 1700mm wide leads to a wide 1800mm level concrete corridor.

External entrances: Double door entrance of 1200mm with a small threshold of 50mm. The door is kept open at opening hours. Wheelchair access (Y++)

Reception desk: The counter is at sitting height.

Foyer: Barrier free with very good circulation space throughout (Y++)

Internal: Low pile carpet and vinyl flooring. Good wheelchair circulation. The displays are clearly signed and information is easy to read. The display cabinets can be viewed from a seated position. The entries to the various rooms are good with the narrowest entry of 800mm. There is a small lip of 50mm at each entry.

External Area: There are a number of tables and seats available under a gazebo within the rear external area. Tables are 780mm with good knee clearance. The bench seats are 470mm. There is a brick footpath from the backdoor to the gazebo and the accessible toilets. There is ample room for wheelchairs and circulation space is very good (Y++).

Seating: There are 2 armchairs with back support within the internal area.

Signage: There is a directional heritage sign in Robinson Street.

Services and equipment for people with disabilities: No.

Accessible toilet:

There are 2 designated male and female toilets onsite at the rear of the museum.

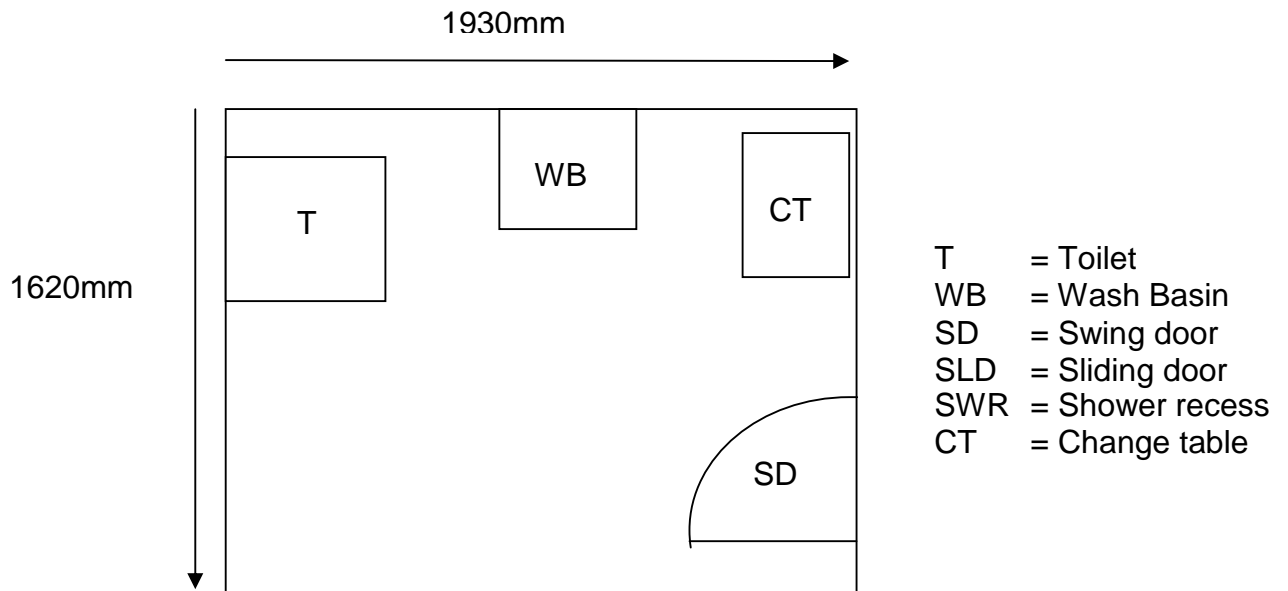
External Access: A barrier free brick path of 1400mm leads to the toilet block. Wheelchair access is very good (Y++).

Door: Clearly signed and 870mm wide a knob handle and a push button snib. There is internal clearance of 750mm on the latch side. There is also a small baby change table 580mm high.

Pan height: 440mm.

Basin height: 840mm.

Lighting: The light is on at all times.



Information collected by:

Shire of Broome August 2007

Care has been taken to ensure the accuracy of this information however no guarantee is given that the facility is fully accessible.

Please advise the Shire of Broome of any access changes since publication.

'You're Welcome WA Access Initiative' © Disability Services Commission 2007



The **You're Welcome WA Access Initiative** was developed by the Disability Services Commission in partnership with the Western Australian Local Government Association, Ministerial Advisory Council on Disability, People with Disabilities (WA) Inc, Tourism Western Australia, ACROD WA, NICAN WA and the City of Perth.