

Shire of Broome

Broome Veterinary Hospital

Location: Cnr Cable Beach Road and Frederick Street

Services: Pet boarding, general VET services including surgery, retail pet supplies

Opening Hours:

Monday to Friday	8.00am – 6.00pm
Saturday	8.00am – 11.00am, after hours by appointment
Sunday/Public Holidays	Closed

Telephone: (08) 9192 1319

Web: No.

Closest public transport: Town Bus Stop nearby at the Recreation Centre, about 7minutes away.

Accessible toilet: Onsite.

Pick up / set down bay: Yes, near the front.

Accessible Parking: Yes, at the entrance.

Signage: Clear and easy to read from road.

External access: A wide 1100mm barrier free paved path connects the parking bay to the entrance door.

Main entrance: Double swing doors 740mm wide with 'D' handle, heavy to open and slow to close with good clearance on latch side.

Internal: There is sufficient space for all styles of wheelchairs to circulate and access all public areas. The floor is tiled.

Reception: The counter is at standing height.

Services and equipment: No.

Waiting Area: The seating provided is firm with a seat height of 480mm.

Information: The information on displays is at standing height but easy to read with good colour contrast.

Unisex Accessible toilet: One unisex accessible toilet is provided within the centre.

Access to the toilet: The toilet is to the rear of the treatment room. The receptionist will show patrons to the toilet.

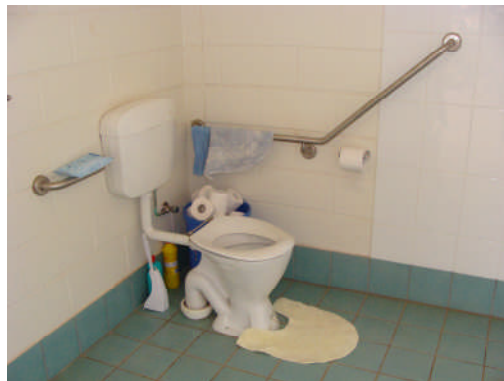
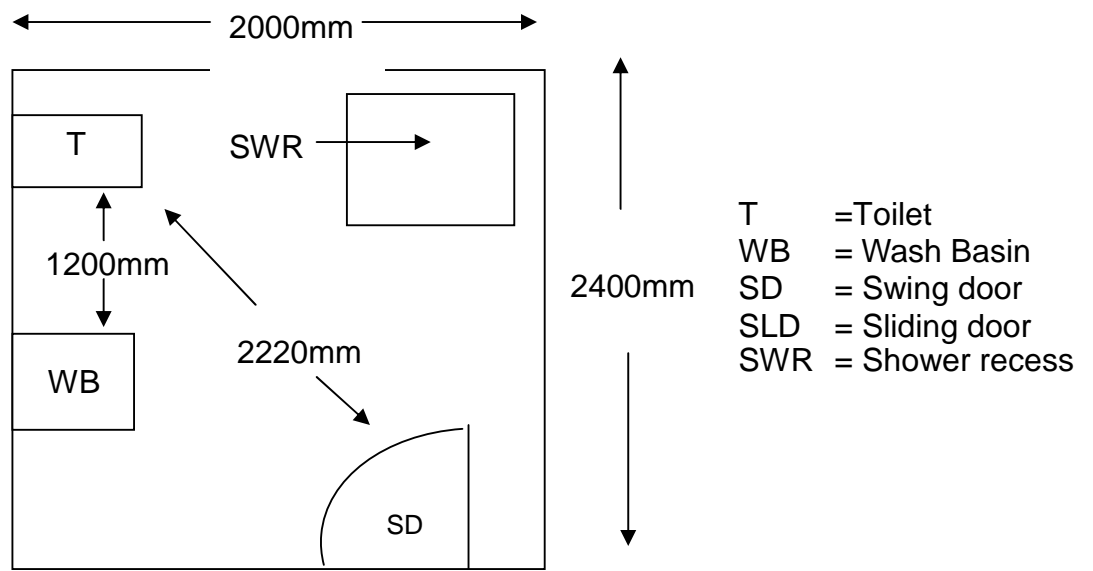
Internal: Circulation space suitable for users of all wheelchair types. The cubicle also has shower facilities.

Door: A swing door with a knob with button snib handle. The door is 860mm wide with 700mm clearance on the latch side. The door is light to open and fast to close.

Pan height: 460mm.

Basin height: 790mm with good knee clearance.

Light: Light switch at sitting height.



Medical Rooms: There are 2 rooms available, however only one has ample space for good wheelchair circulation. The room is tiled throughout with a door width of 800mm and a knob handle. The table height is 880mm and no other seating is provided.

Information collected by:

Shire of Broome August 2007

Care has been taken to ensure the accuracy of this information however no guarantee is given that the facility is fully accessible.

Please advise the Shire of Broome of any access changes since publication.

'You're Welcome WA Access Initiative' © Disability Services Commission 2007



The **You're Welcome WA Access Initiative** was developed by the Disability Services Commission in partnership with the Western Australian Local Government Association, Ministerial Advisory Council on Disability, People with Disabilities (WA) Inc, Tourism Western Australia, ACROD WA, NICAN WA and the City of Perth.