

Shire of Broome

## **Cable Beach Club Resort**

**Location:** Cable Beach Road, Cable Beach

**Telephone:** (08) 9192 0400

**Web:** [www.cablebeachclub.com](http://www.cablebeachclub.com)

**Accessible parking bay onsite:** One accessible parking bay in the front car park.

**Drop off available:** Yes.

**Closest public transport:** Town Bus Stop at Cable Beach close to the entrance of the resort.

**Accessible public toilet onsite:** Yes.

**Accessible parking:** Valet parking available.

**Pick up / set down bay:** An undercover Vehicle drop off is at the entrance of the resort.

**External access:** A barrier free three metre wide pedestrian boardwalk connects the pick-up bay with the foyer entrance.

**Main entrance:** Double swing doors of 750mm width with push action to open. The doors are light to open and slow to close.

**Foyer:** Polished wood flooring and ample circulation for all styles of wheelchairs (Y++). The seating provided in the foyer is firm with armrests and backrests and have a seat height of 480mm.

**Reception:** The reception & concierge desk are both at standing height.

**Signage:** Is clear and easy to read and has good colour contrast.

**Information:** There are directory boards throughout the Resort, with good colour contrast and lit at night.

**Accessible public toilet:** The accessible male or female toilets are located next to the Club Restaurant near the reception. Please see report on The Club Restaurant.

**Accessible rooms:** There are two accessible rooms.

**Emergency:** There is an emergency map on the inside of the room door.

**Access to rooms:** A barrier free wooden ramped pathway 1460mm wide connects from brick paved pathways that traverse the resort. The gradients vary. The ramps to the room are 6.3 degrees (1.9).

### **Accessible rooms:**

**Door:** A card-entry swing door 800mm wide has a lever handle. The door is light to open and slow to close. Wheelchair access to room is very good (Y++) with an internal clearance of 770mm on the latch side of the room door. The lighting in the room is key card activated. The switch height is 1360mm. The floor is polished wood throughout the living area.

**Tea and coffee:** The tea and coffee facilities are within reach of wheelchair users with a bench height of 1030mm.

**Lounge:** The two chairs provided are soft with backrests and armrests with a seat height of 470mm.

Bed: There is 940mm space between the bench and the base of the twin single beds. The beds have gliding feet and could be joined. They are soft and have a height of 580mm. There is a 150mm clearance under the bed suitable for a hoist. There are lowered light switches at the bedsides.

**Room facilities:**

- TV with remote control
- Lowered light switches
- Switch controlled air conditioning at sitting height

Bathroom:

Door: The toilet door is a slide door 1020mm wide with a 'D' handle. The door is heavy to open and close. The door doesn't have a snib. Wheelchair access is good with a 900mm clearance on either side of the latch side of the door. There is sufficient circulation space for all types of wheelchairs.

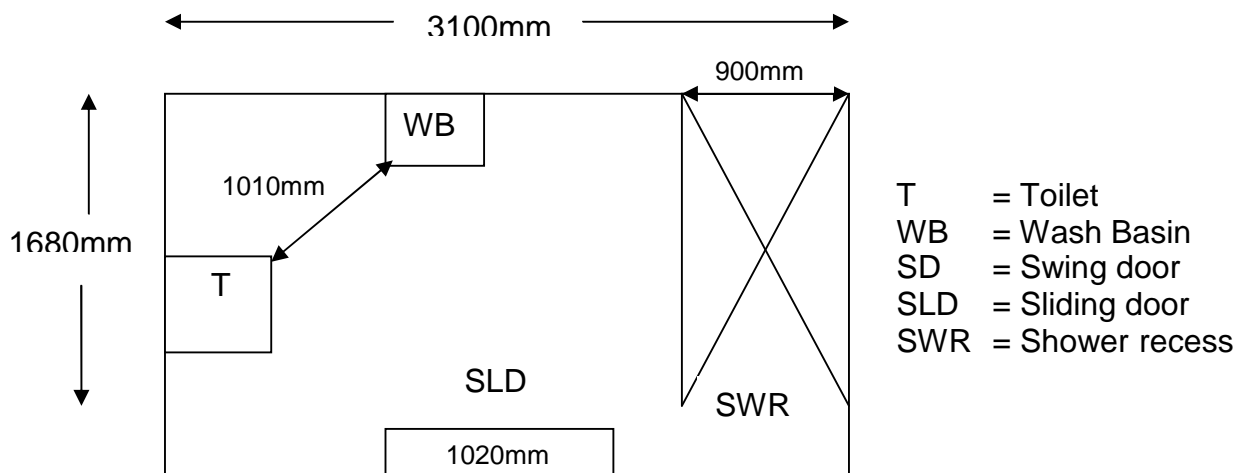
Pan height: 450mm high.

Basin height: 800mm with knee clearance.

Shower: There is level access to the shower.

Emergency call buttons: No.

Lighting: Light switch in cubicle is 900mm high.





**Pool:**

The Family Pool is located next to the Boardwalk Café and Club Restaurant.

Door: The access door is 1100mm wide with a lever handle and a room key entry. The door is light to open and closes automatically.

The pool area is spacious with ample circulation for all styles of wheelchairs. The pool has sailcloth shading.

The pool is a 'Roman Bath' style and access into the pool is via steps. There is also a children pool incorporated into the area as well as a child's playground.

**Guest Laundry:** The laundry is situated at the same wing. The laundry door is 750mm wide with a 1200mm clearance on the latch side. The door is kept open. There is sufficient room for wheelchair circulation. The washing machine is a front loader at sitting height.

**Information collected by:**

**Shire of Broome August 2007**

**Care has been taken to ensure the accuracy of this information however no guarantee is given that the facility is fully accessible.**

**Please advise the Shire of Broome of any access changes since publication.**

'You're Welcome WA Access Initiative' © Disability Services Commission 2007



The **You're Welcome WA Access Initiative** was developed by the Disability Services Commission in partnership with the Western Australian Local Government Association, Ministerial Advisory Council on Disability, People with Disabilities (WA) Inc, Tourism Western Australia, ACROD WA, NICAN WA and the City of Perth.