

Shire of Broome

## **Cable Beachside Resort**

**Location:** 2 Murray Road, Cable Beach

**Telephone:** (08) 9193 5545

**Web:** [www.cablebeachside.com.au](http://www.cablebeachside.com.au)

**Accessible parking bay onsite:** One accessible parking bay at reception.

**Closest public transport:** Town Bus Stop on Cnr Cable Beach Road & Murray St.

**Accessible public toilet onsite:** No.

**Pick up / set down bay:** Located outside reception area.

**Signage:** Cable Beachside Resort signage on road is easy to read.

**External access:** Access to the foyer is via a pedestrian ramp 1900mm wide with a 4.8 gradient (1.15).

**Main entrance:** The 800mm wide swing door has a lever handle. It is light to open and it has a 500mm clearance on the latch side.

**Foyer:** The foyer has tiled flooring and 1400mm circulation space (Y+).

**Reception:** The counter is at standing height.

**Information:** Printed information is accessible at sitting height.

**Accessible rooms:** There is one non-smoking accessible self-catering 2 bedroom suite available.

**Emergency:** No.

**Access to rooms:** A wide 2100mm path with a pedestrian ramp of 3.2 degree (1.18) leads to the entrance door. Wheelchair access (Y++).

### **Accessible rooms:**

**Door:** The key entry swing door is 800mm wide with ample clearance for wheelchairs (Y++). The door has a knob handle and is light to open and slow to close. Light switches are 1150mm high.

The two bedroom suite has a lounge, kitchen and separate dining areas. The laundry is situated behind doors in the dining room, with washing machine heights of 900mm. The spacious suite has tiled flooring throughout and there is ample circulation space for all types of wheelchairs (Y++).

**Tea and coffee:** The spacious kitchen area has bench tops at 920mm. Tea and coffee facilities are within reach of a wheelchair user.

**Lounge:** The seating in the lounge has armrests and backrests at a sitting height of 450mm. The lounge area is roomy with good wheelchair to all areas.

**Bed:** The bedroom door is 800mm wide with a knob handle. There is a double door of 1630mm leading to the dining area. The washing machine is 900mm high and is a top loader.

Bathroom -

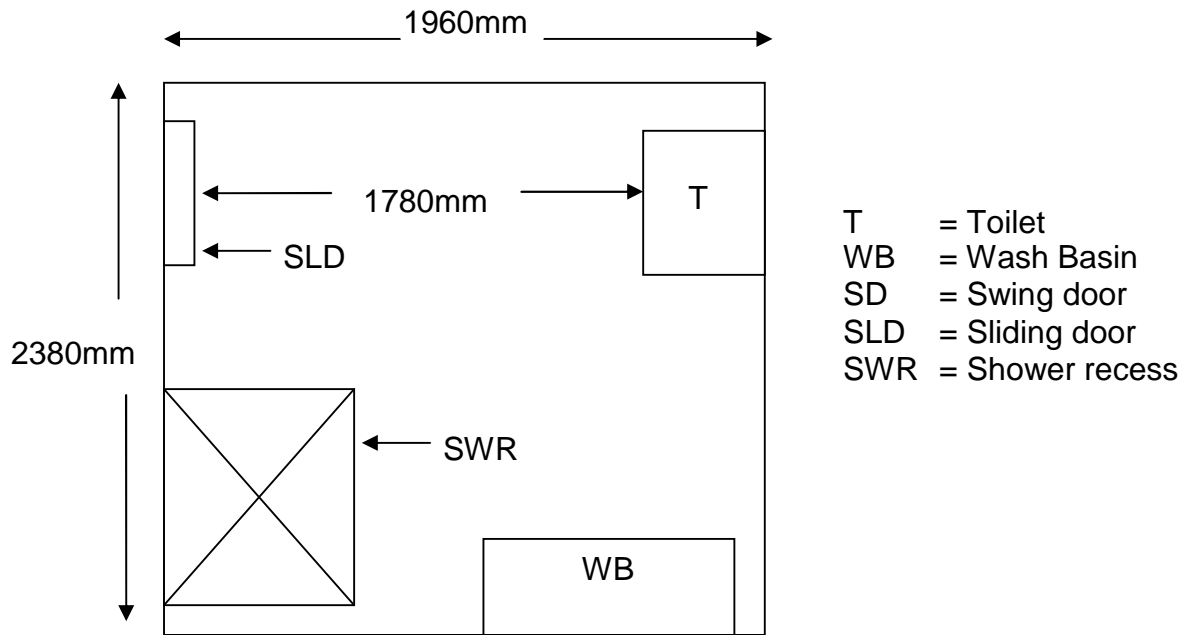
Door: The sliding door is 750mm wide with an indented handle and is heavy to open. The floor is level throughout.

Pan height: 470mm high.

Basin height: 740mm with knee clearance.

Shower: The shower has a grab rail and the taps are at sitting heights.

Emergency call buttons: No.





**Pool:**

The open-air swimming pool has two entrance gates. Both are 930mm wide with lift up knob latch mechanism 1700mm high. The door is light to open. There are movable lounge chairs situated around the pool area. Wheelchairs could access most areas depending on the positioning of lounges. Just outside the pool area is a shades gazebo with tables, chairs and barbecues. The chairs are movable and have armrests and backs. The tables have good knee clearance.

**Information collected by:**

**Shire of Broome on August 2007**

**Care has been taken to ensure the accuracy of this information however no guarantee is given that the facility is fully accessible.**

**Please advise the Shire of Broome of any access changes since publication.**

'You're Welcome WA Access Initiative' © Disability Services Commission 2007



The **You're Welcome WA Access Initiative** was developed by the Disability Services Commission in partnership with the Western Australian Local Government Association, Ministerial Advisory Council on Disability, People with Disabilities (WA) Inc, Tourism Western Australia, ACROD WA, NICAN WA and the City of Perth.