

Shire of Broome

Chinatown Public Toilet - Male Oval

Location: Carnarvon St next to Male Oval, Chinatown

Cost: Free

Availability: Daily 6:45am – 6:30pm

Gender: 9 Unisex toilets

Closest accessible parking: Street Parking or at Roebuck Bay Hotel car park just opposite.

Closest public transport: Town bus stop just next to the toilet building.

Signage: There is good signage from main thoroughfare, easy to read with colour contrasts and access symbol.

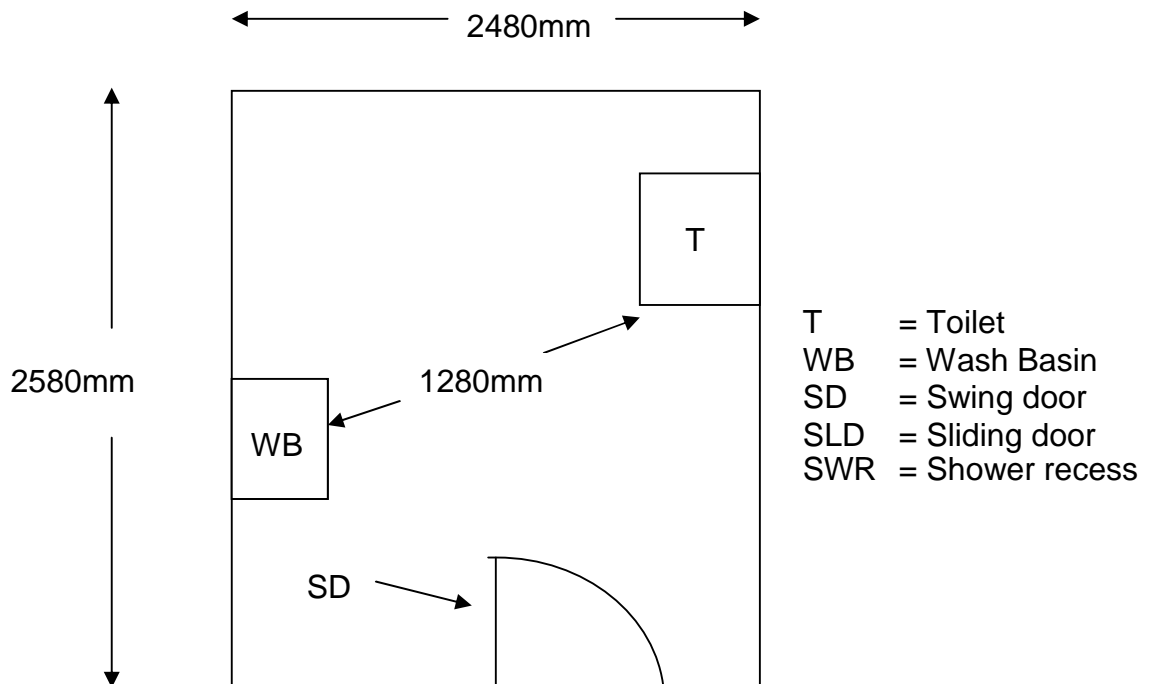
Entrance door: 850mm wide swing door light to open and slow to close. With 'D' handle, large snip and 800mm clearance on latch side (Y++).

Pan height: 470mm.

Basin height: 790mm.

Baby change table: 1000mm high and fixed with good knee clearance

Lighting: automatic, when door opens





Information collected by:

Shire of Broome August 2007

**Care has been taken to ensure the accuracy of this information however no guarantee is given that the facility is fully accessible.
Please advise the Shire of Broome of any access changes since publication.**

'You're Welcome WA Access Initiative' © Disability Services Commission 2007



The **You're Welcome WA Access Initiative** was developed by the Disability Services Commission in partnership with the Western Australian Local Government Association, Ministerial Advisory Council on Disability, People with Disabilities (WA) Inc, Tourism Western Australia, ACROD WA, NICAN WA and the City of Perth.