

Shire of Broome

Dakas Street Medical Centre

Location: 67 Dakas Street, Broome

Services: Doctors, Pharmacy, Pathology, Skin Cancer Clinic, Occupational Medicine, Psychology, Work Rehab

Opening Hours:

Mon - Friday	8.00am – 5.00pm
Saturday	8.00am – 12.00pm
Sunday/Public Holidays	Closed

Telephone: (08) 9192 6311

Web: www.dakasstmedical.com.au

Closest public transport: There is no Town Bus stop near by. The closest one is on Cable Beach Road near to the Broome Recreation and Aquatic Centre at least 15minutes away.

Accessible toilet: Onsite.

Pick up / set down bay: It is possible to pick up / drop off right at the entrance, where a ramp takes you directly to the door.

Accessible Parking: 2 designated bays are located at the front of the centre. Ample not designated bays all round. A barrier free path of travel with small ramp leads to front entrance.

Signage: Large easy to read signage with good colour contrast is provided. A directory board is located in the reception/waiting room area.

External access: Small ramp with wide barrier free paved path leads to entrance.

Main entrance: Double glass manual doors lead into reception.

Internal: There is sufficient space for all styles of wheelchairs to move through medical centre.

Reception: The reception area is at standing height, but a seated person would be seen and able to communicate without difficulty.

Services and equipment: There are 2 adjustable beds in the treatment room and nursing staff is available to assist with disabled patients.

Waiting Area: The seats are firm and can be easily accessed by all styles of wheel chairs.

Information: Pamphlets regarding services and treatments are located on waiting room area tables.

Unisex Accessible toilet:

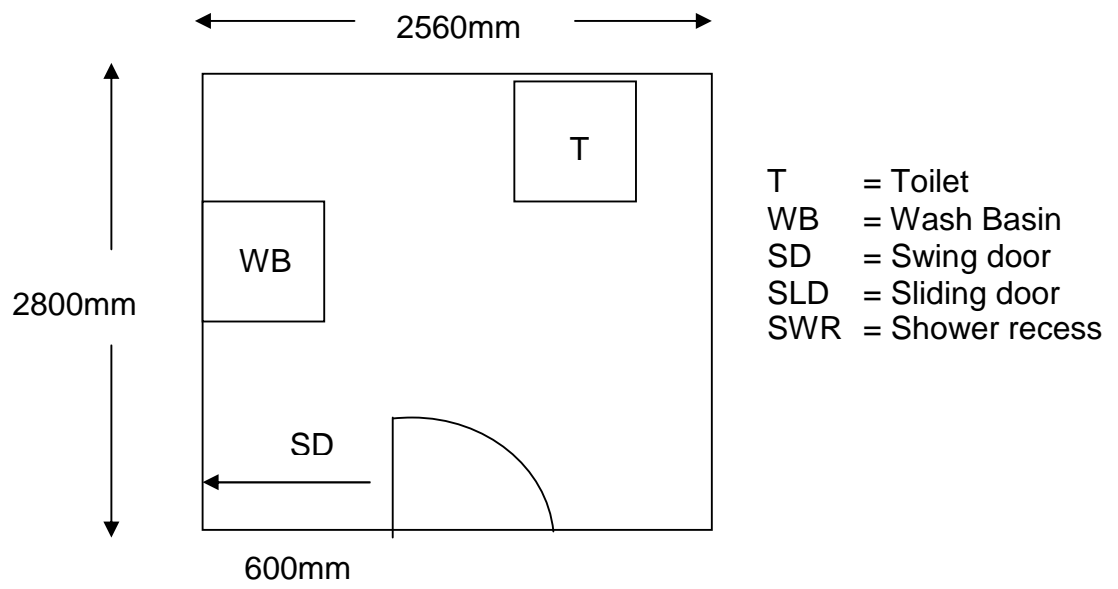
Internal: Circulation space suitable for users of all wheelchair types (Y+)

Door: Push handle door is easy to open and close. The door has a large snib.

Pan height: 480mm

Basin height: 800mm

Light: Light switch located left hand side at entrance. Height of switch 1350mm



Medical rooms: There are three doctor consulting rooms and 2 nursing rooms with easy access by all forms of wheel chair.

Floor surface: Vinyl
Door width: 870mm
Circulation area: 2250mm
Facilities: Examination Table

Treatment room: There is a large treatment room with 2 adjustable treatment beds available the examination areas are screened and privacy is assured.

Pathology: There is a specialised Pathology room with a clinical nurse available to take blood samples

Work Rehabilitation:

There is a work rehab centre located within the medical centre for customers who are referred to by a workers compensation board.

Pharmacy: The pharmacy is adjacent to the doctor's medical centre and easily accessed by all types of wheelchair (Y+)

Information collected by:

Shire of Broome August 2007

Care has been taken to ensure the accuracy of this information however no guarantee is given that the facility is fully accessible.

Please advise the Shire of Broome of any access changes since publication.

'You're Welcome WA Access Initiative' © Disability Services Commission 2007



The **You're Welcome WA Access Initiative** was developed by the Disability Services Commission in partnership with the Western Australian Local Government Association, Ministerial Advisory Council on Disability, People with Disabilities (WA) Inc, Tourism Western Australia, ACROD WA, NICAN WA and the City of Perth.