

Shire of Broome

Henry's Café Broome

Location: Cnr Short St and Carnarvon St, Chinatown

Type: Indoor & alfresco dining, counter sale and table service

Opening hours: Monday to Friday 7.30am – 4.00pm
Saturday & Sunday 7.30am – 2.00pm

Telephone: (08) 9192 3222

Bookings taken: Yes.

Closest accessible parking: Disabled parking available at Paspaley Shopping Centre's side car park, just opposite.

Pick up / set down bay: No

Closest public transport: 2 town bus stops in Carnarvon street about 2 minutes away.

Signage: Clear signage on both sides of the building.

External access: Wheelchair access to upper level alfresco dining and to internal area via ramp from Short Street. There is level access to lower level alfresco dining. Wheelchair access (Y+).

Entrance door: Wide open barrier free double doors.

Internal: Wooden floor with limited wheelchair access. Place order on counter, however staff will attend wheel chair patrons. The pedestal tables are 720mm high and the wooden chairs with firm seating are 460mm high.

Food counter: At sitting height, with food displays at sitting height.

Alfresco: Upper level outdoor dining is well shaded with pedestal tables and firm seating.

Menu: They are in good colour contrast with easy to read font.

Accessible toilet:

There is a unisex toilet at the rear of the building. Access is by way of path with a small ramp. Ask staff for the key.

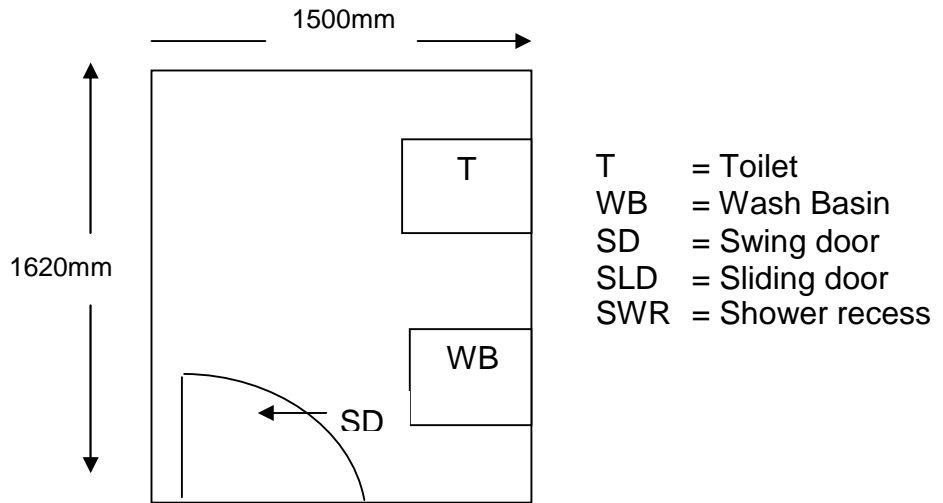
External access: Barrier free pedestrian footpath with slight gradient. Wheelchair access rating is (Y).

Door: The door is 800mm wide with appropriate signage on it. There is a swing door with knob handle, which is heavy to open and fast to close. There is good clearance on latch side 670mm.

Pan height: 480mm with rail on wall

Basin height: 830mm

Lighting: The light switch is 1000mm above ground and located on right hand side. Wheelchair suitability rating is (Y)



Information collected by:

Shire of Broome August 2007

Care has been taken to ensure the accuracy of this information however no guarantee is given that the facility is fully accessible.

Please advise the Shire of Broome of any access changes since publication.

'You're Welcome WA Access Initiative' © Disability Services Commission 2007



The **You're Welcome WA Access Initiative** was developed by the Disability Services Commission in partnership with the Western Australian Local Government Association, Ministerial Advisory Council on Disability, People with Disabilities (WA) Inc, Tourism Western Australia, ACROD WA, NICAN WA and the City of Perth.