

Shire of Broome

McDonalds & McCafe

Location: 1 Hamersley Street, Broome

Affiliate: McDonald's & Mc Café

Type: Indoor & Alfresco & Take away & drive through fast food

Opening hours: 24 hours, 7 days a week

Telephone: (08) 9192 6999

Web: www.mcdonalds.com.au

Bookings taken: Yes for large numbers

Closest accessible parking: One designated disabled parking bay.

Pick up / set down bay: Yes at the front and side entrance.

Closest public transport: Town Bus stop at Male Oval on Carnarvon Street or at Broome Motel, about 5 - 7 minutes away.

Accessible toilet: onsite.

Signage: There is very good directional Signage with colour contrast and easy to read.

External access: From the car park via a short ramp (Gradient 1.10)

Entrance door: Wide double automatic doors.

Internal: There is sufficient space for all styles of wheelchairs to move through the internal tiled area (Y++).

Food counter: At sitting height of 910mm, with good view of food displays.

Seating: Internal are 6 pedestal tables with good knee clearance and movable chairs and benches. They have armrests and backrests and are about 406mm high. External are 17 pedestal tables and chairs, mostly with arm- and backrests with the same height.

Menu: Good colour contrast and easy to read.

Accessible toilet:

There is a unisex accessible toilet suitable for all wheelchairs (Y++).

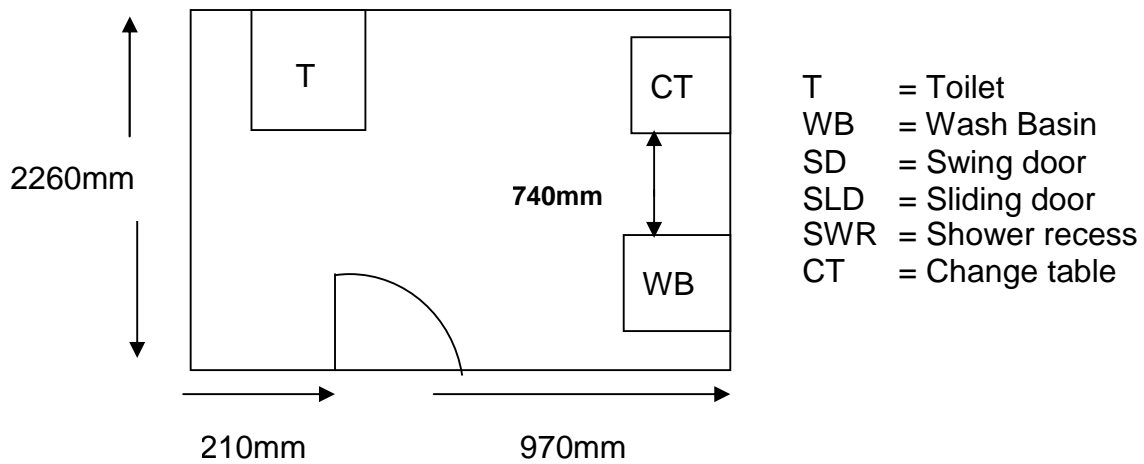
External access: Suitable for all wheelchairs.

Door: The toilet has a 920mm wide swing door with a 'D' handle. The door is easy to open and slow to close.

Pan height: 460mm.

Basin height: 870mm with knee access.

Lighting: The light is on at all times.



Information collected by:

Shire of Broome August 2007

Care has been taken to ensure the accuracy of this information however no guarantee is given that the facility is fully accessible.
 Please advise the Shire of Broome of any access changes since publication.

'You're Welcome WA Access Initiative' © Disability Services Commission 2007



The **You're Welcome WA Access Initiative** was developed by the Disability Services Commission in partnership with the Western Australian Local Government Association, Ministerial Advisory Council on Disability, People with Disabilities (WA) Inc, Tourism Western Australia, ACROD WA, NICAN WA and the City of Perth.