

Shire of Broome

## **Moonlight Bay Suites**

**Location:** 51 Carnarvon St, Chinatown

**Telephone:** (08) 9193 7888

**Web:** [www.kimberleyaccommodation.com.au](http://www.kimberleyaccommodation.com.au)

**Accessible parking bay onsite:** No.

**Drop off available:** Pick up and set down area at reception.

**Closest public transport:** Town Bus stop on Carnarvon Street, about 3 minutes away.

**External access:** From set down area by way of a small ramp of 3 degree (1.19).

**Main entrance:** Level Access to open door 900mm wide.

**Foyer:** Tiled floor with ample circulation space for wheelchair (Y++). There is soft lounge chair seating available with seats being 460mm high and with armrests and backrests. There is also a writing table available.

**Reception:** The counter is at standing height. No better hearing card on display.

**Signage:** All signage is clear and easy to read.

**Accessible public toilet:** No

**Access to room:** A brick paved path of 1280mm width and a ramp of 6 degrees (1.10) leads to the rooms. (Y+)

**Emergency:** Not available

**Accessible rooms:** There are two accessible rooms.

Door: The room door has a key access and is 760mm wide with a slide action. The glass door is light to open and close with a 'D' handle. The door has an external clearance of 1080mm on the latch side and an internal clearance of 1080mm on the latch side.

Light: The room light is key-activated and reachable at standing heights of 1350mm.

Tea and coffee: There is a tea / coffee facility (kitchenette) within reach in standing height of 900mm with good wheelchair circulation.

Lounge: A small lounge area has tup style chairs with a seat height of 430mm. The telephone has a volume control and the TV has a remote control. The table lamp is at sitting height of 780mm.

Bedroom: An open space of 980mm leads to the main bedroom from the lounge area. There is good wheelchair circulation in the room with ample clearance either side of the double bed. The non-movable double bed is firm with a height of 540mm and a clearance of 130mm from the floor.

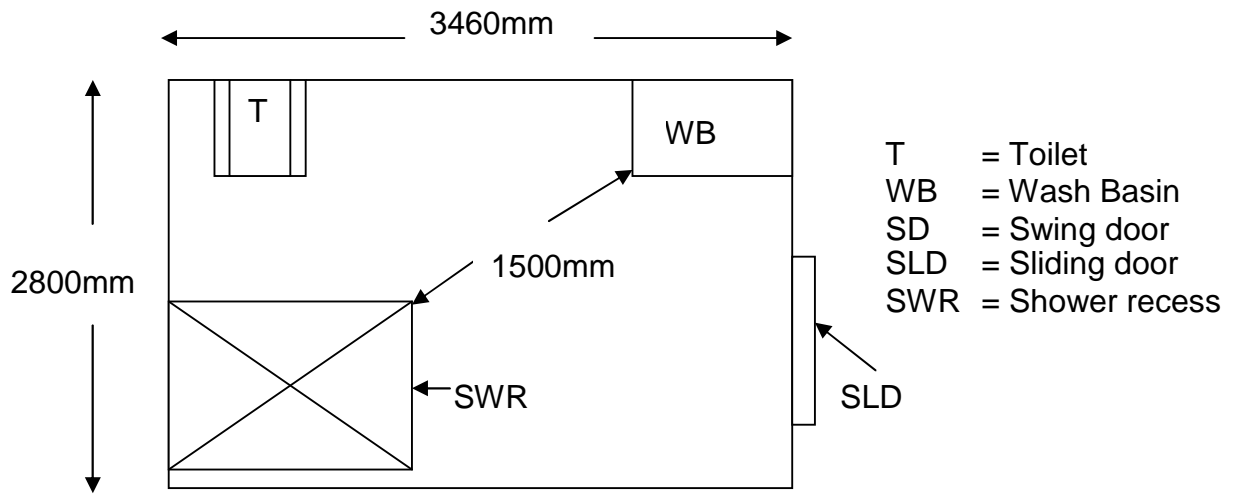
Carers Room: There is a carer's room adjacent to the main bedroom and bathroom. Wheelchair circulation is good (Y++) and access is barrier free with a wide entry of 850mm.

Bathroom: The 840mm wide sliding door is heavy to open and close. The access is level and wheelchair access is good with 1240mm clearance on the latch side of the door.

Pan height: 400mm

Basin height: 830mm

Lighting: ?



Swimming Pool: Located on the rear and overlooking Roebuck Bay, the pool and spa are accessible from the northern car park. The brick paved pathway is barrier free and 1850mm wide. The entrance gate is 970mm wide and has a high 1630mm knob latch. The door is light to open and close. There is ample clearance for wheelchair access (Y++). The pool is a roman baths style with a small lip of 120mm. Access to the water is via 3 steps, with a handle bar. The spa is located next to the pool entry.

**Guest Laundry:** No

**Information collected by:**

**Shire of Broome August 2007**

**Care has been taken to ensure the accuracy of this information however no guarantee is given that the facility is fully accessible.**

**Please advise the Shire of Broome of any access changes since publication.**

'You're Welcome WA Access Initiative' © Disability Services Commission 2007



The **You're Welcome WA Access Initiative** was developed by the Disability Services Commission in partnership with the Western Australian Local Government Association, Ministerial Advisory Council on Disability, People with Disabilities (WA) Inc, Tourism Western Australia, ACROD WA, NICAN WA and the City of Perth.