

Paspaley Plaza Shopping Centre

Location: Cnr Short Street and Carnarvon Street, Chinatown

Opening hours:

Coles:	Monday – Sunday	6.00am – 10.00pm
Liquor store:	^Monday – Saturday	12.00pm – 8.00pm
Speciality Stores:	Monday – Saturday	*9.00am – 4.30pm

*some opening times may vary and some stores open Sunday
^hours may vary according to local liquor accord

Web: www.paspaleyplaza.com.au

Telephone: (08) 9193 5928

Closest accessible parking: There are 2 designated disabled parking bays at the Short Street car park near the side entrance. There are another 4 accessible parking bays on Short Street just outside the Short Street car park, Gray Street car park and Carnarvon Street.

Closest public transport: There is a Broome Town Bus Stop on Carnarvon Street about 5 minutes away from the main entrance. There is another Bus Stop at the Broome Visitor Centre about 5-7 minutes away from the side entrance in Short Street.

Closest pick up / set down bay: There is no designated spot, but it is possible to drop someone off at the side entrance from Short Street, right in front of the entrance.

Closest accessible toilet: Onsite.

Signage: The signage is clear and easy to read from Short Street and Carnarvon Street.

External Access: A brick paved barrier free path of 2300mm leads to wide automatic doors to the main entrance and the side entrance of the shopping centre. Wheelchair access (Y++).

Internal: Both entrances have 1840mm wide automatic doors leading to wide generally unobstructed pedestrian walkways. The shopping centre is tiled and air-conditioned throughout. There is level access into all shops and services. Wheelchair access (Y++).

Seating: There are wooden benches with arm- and backrests throughout the mall with a seating height of 480mm.

Outside Area: The pedestrian area outside Short Street and Carnarvon Street surrounds the centre and leads to the entrance of different retail outlets and services (e.g. Laundromat service, Harvey Travel, Sports power etc). It is a wide brick paved pathways mostly undercover. Wheelchair access (Y++).

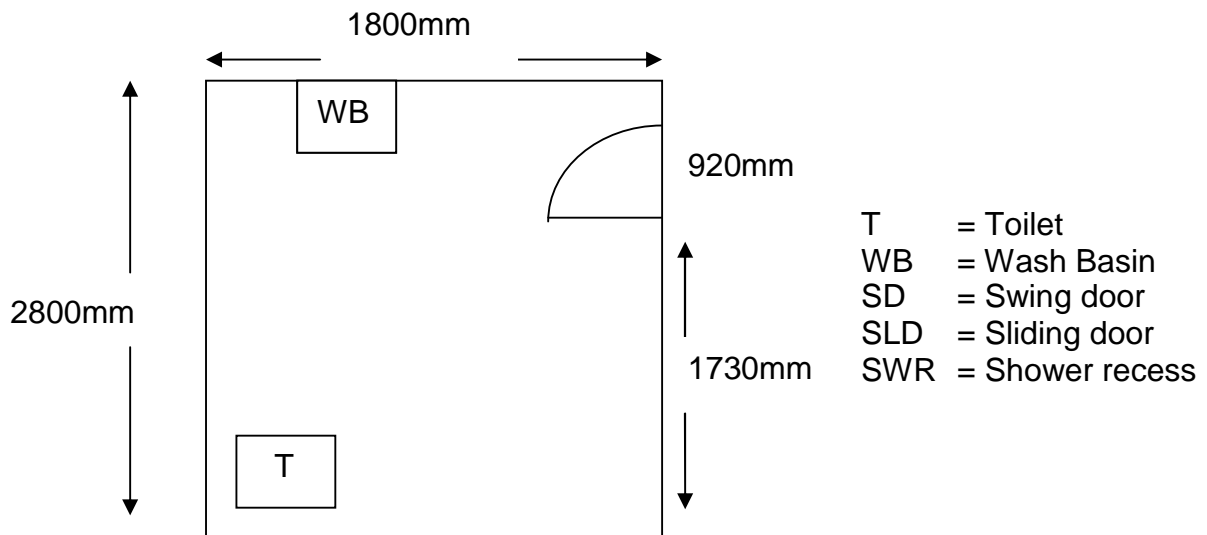
Accessible toilets: There is a clearly signed designated disabled unisex toilet situated in the brick paved pedestrian area at Carnarvon Street next to Coles. The toilet is locked and the key can be picked up from the Centre Management office, during office hours, Coles Service desk. Security or cleaning staff will also be able to unlock the door.

Entry door: The toilet door is 920mm wide with 1730mm clearance on the latch side.

Pan height: 460mm with grab rails.

Basin height: 840mm.

Lighting: is on at all times.



Information collected by:

Shire of Broome August 2007

Care has been taken to ensure the accuracy of this information however no guarantee is given that the facility is fully accessible.

Please advise the Shire of Broome of any access changes since publication.

'You're Welcome WA Access Initiative' © Disability Services Commission 2007



The **You're Welcome WA Access Initiative** was developed by the Disability Services Commission in partnership with the Western Australian Local Government Association, Ministerial Advisory Council on Disability, People with Disabilities (WA) Inc, Tourism Western Australia, ACROD WA, NICAN WA and the City of Perth.