

Shire of Broome

Pearl Luggers

Location: Dampier Terrace, Chinatown

Opening hours:

Showroom: Monday to Friday: 9.00am – 5.00pm
Saturday & Sundays: 9.00am – 3.00pm
Evening Programs: from 6.00pm

Bookings Taken: Yes.

Telephone: (08) 9192 2059

Web: www.pearlluggers.com.au

Closest accessible parking: One designated disabled parking bay available.

Pick up / set down bay: No.

Signage: Clear and easy to read with good colour contrast.

Closest public transport: Town Bus stop at Dampier Terrace about 5minutes away.

Accessible toilet: onsite.

Food outlet on site: Yes.

External access: Wide pedestrian path of 1900mm with small ramp of 4degrees. Wheelchair access is (Y++).

External entrances: A double door open 1250mm wide leads to a wide foyer area with good circulation space. (Y++)

Foyer: Is a level paved area with sailcloth shading. There is a water fountain accessible at sitting heights.

Pearl Luggers: The access for viewing of Pearl Luggers is by way of Boardwalks of 1850mm with handrails on either side. Wheelchair access (Y++).

Showroom: The double entry door of 1250mm has a 30mm step down threshold. The internal circulation is good with 2600mm. Displays are at sitting and standing heights. The payment counter is at standing height.

Seating: There are 2 chairs available with back- and arm support and seating heights of 470mm.

Services & Equipment for disabled people: No.

Accessible toilet: The unisex toilet is at the rear of the maintenance shed at the northern end of the complex.

External access: A level barrier free brick paved path of 1500mm leads to the toilet door, which is suitable for all styles of wheelchairs to move through.

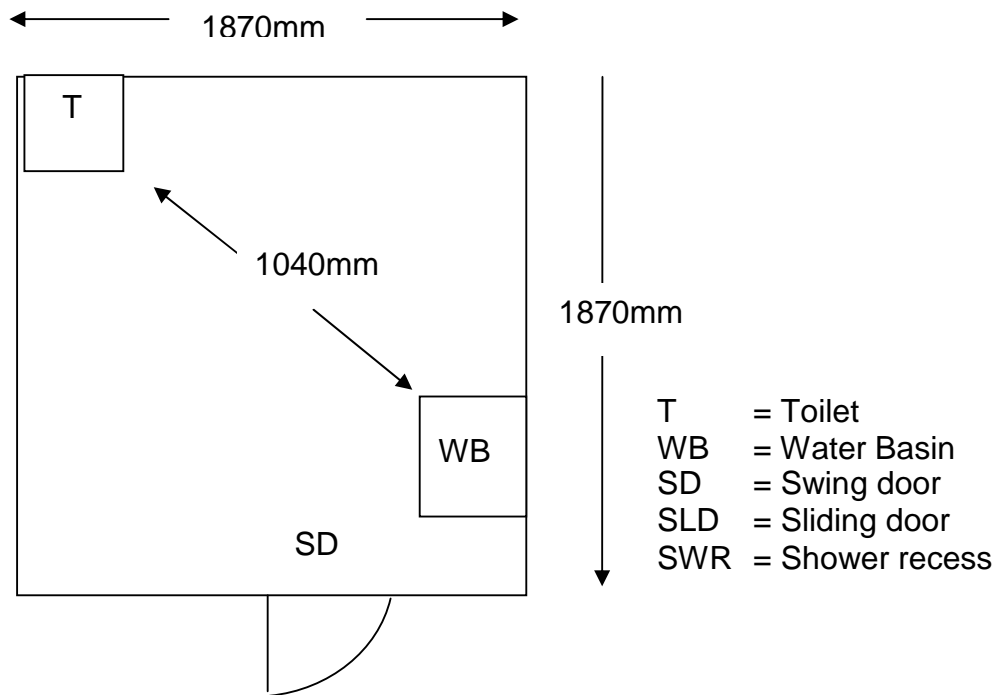
Door: 870mm wide swing door with a knob handle opens outward and is light to open and to close. It has a 730mm external clearance on the latch side (Y++). The door has a knob handle with a push button snib.

Pan height: 480mm.

Basin height: 800mm.

Lighting: There is a light switch in the corner about 1400mm high.

Signage: There are no directional signs to this toilet.



Information collected by:

Shire of Broome August 2007

Care has been taken to ensure the accuracy of this information however no guarantee is given that the facility is fully accessible.

Please advise the Shire of Broome of any access changes since publication.

'You're Welcome WA Access Initiative' © Disability Services Commission 2007



The **You're Welcome WA Access Initiative** was developed by the Disability Services Commission in partnership with the Western Australian Local Government Association, Ministerial Advisory Council on Disability, People with Disabilities (WA) Inc, Tourism Western Australia, ACROD WA, NICAN WA and the City of Perth.