

Shire of Broome

## **RSL Club**

**Location:** Cnr Robinson & Barker Street, Broome

**Opening hours:** Tuesday to Thursday 4.00pm – 10.00pm  
Saturday 4.00pm – midnight  
Sunday 10.00am – 6.00pm

**Telephone:** (08) 9192 1003

**Web:** <http://www.broome.wa.gov.au/comcategory.php>

**Closest accessible parking:** No dedicated parking bays. Off-road parking on Barker Street

**Pick up / set down bay:** No.

**Closest public transport:** Town Bus Stop at the Kimberley Klub on Frederick Street, about 7-10minutes away

**Accessible toilet:** Onsite.

**Signage:** Good clear signage can be seen from Robinson and Barker Street

**External access:** Level and barrier free.

**Entrance door:** Wide open entrance. Wheelchair access (Y++).

**Internal:** Concrete flooring and alfresco style tables and chairs set in rows approx. 1500mm apart. There is ample space for wheelchair circulation to most areas including the pool table area.

**Food counter/Bar:** At standing height with one section at sitting heights.

**Seating:** Chairs are movable with firm seating, armrests and backrests. The seating height is 470mm. The tables are movable and with good knee clearance.

**Menu:** BBQ pack on Friday nights.

**Accessible toilet:** There is one unisex accessible toilet.

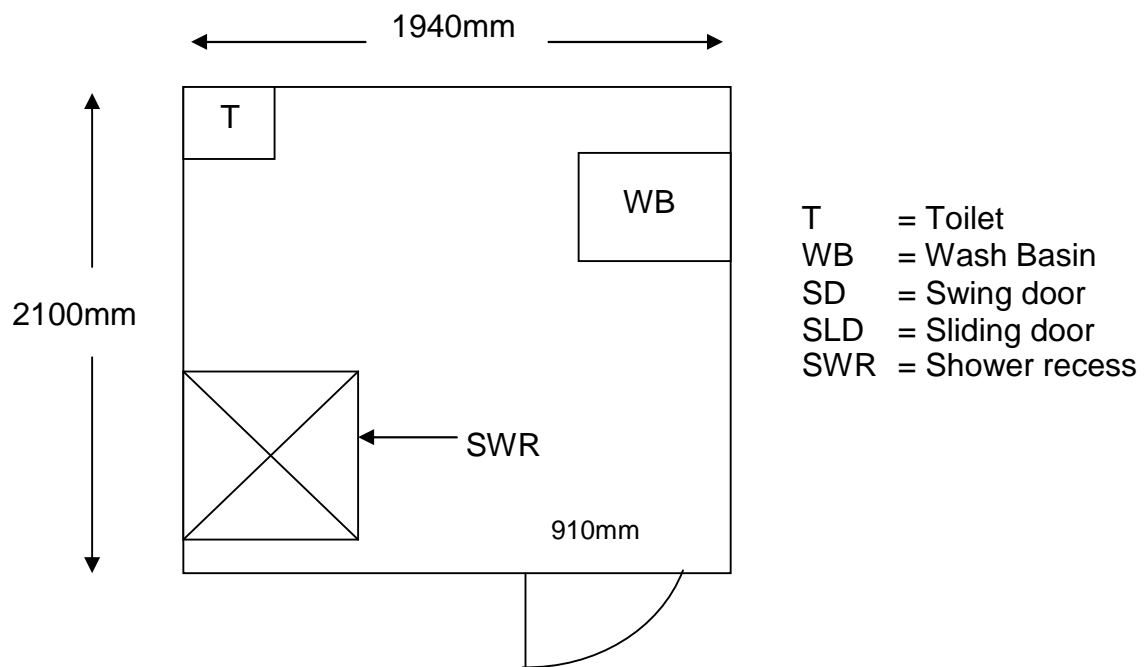
External access: Is level and barrier free.

The toilet has a 910mm wide swing door with a knob/snib handle. The door is heavy to open and fast to close.

Pan height: 460mm.

Basin height: 950mm with knee access.

Lighting: Works with a light switch.



Information collected by:

Shire of Broome August 2007

Care has been taken to ensure the accuracy of this information however no guarantee is given that the facility is fully accessible.  
Please advise the Shire of Broome of any access changes since publication.

'You're Welcome WA Access Initiative' © Disability Services Commission 2007



The **You're Welcome WA Access Initiative** was developed by the Disability Services Commission in partnership with the Western Australian Local Government Association, Ministerial Advisory Council on Disability, People with Disabilities (WA) Inc, Tourism Western Australia, ACROD WA, NICAN WA and the City of Perth.