

Shire of Broome

Rendezvous Sanctuary Resort

Location: Lullfitz Drive, Cable Beach

Telephone: (08) 9192 8088

Web: www.rendezvoushotels.com

Accessible parking bay onsite: There are two designated disabled parking bays

Closest public transport: Town Bus stops right at the entrance of the resort.

Accessible public toilet onsite: Yes.

Accessible parking: 24 hours free parking.

Pick up / set down bay: Yes, directly at the entrance near the reception. There is portage available.

External access: A barrier free 980mm wide ramped corridor (6.7degrees, 1.9) leads to the main entrance, with 1000mm high handrails on either sides.

Main entrance: A five metre wide-open area.

Foyer: Tiled floor with ample circulation for small and large wheelchairs.

Firm lounge seating with arm and backrests, with seating height of 550mm, is available. There are also two writing tables.

Reception: Counter is at standing height. There is printed information on display.

Signage: Very easy to see from main road.

Accessible public toilet:

Location: The toilet is next to the foyer area, between toilet and reception. The access is by way of gated entrance (1000mm wide) that leads to the swimming pool area. The gate opens with lift knob mechanism of 1540mm heights.

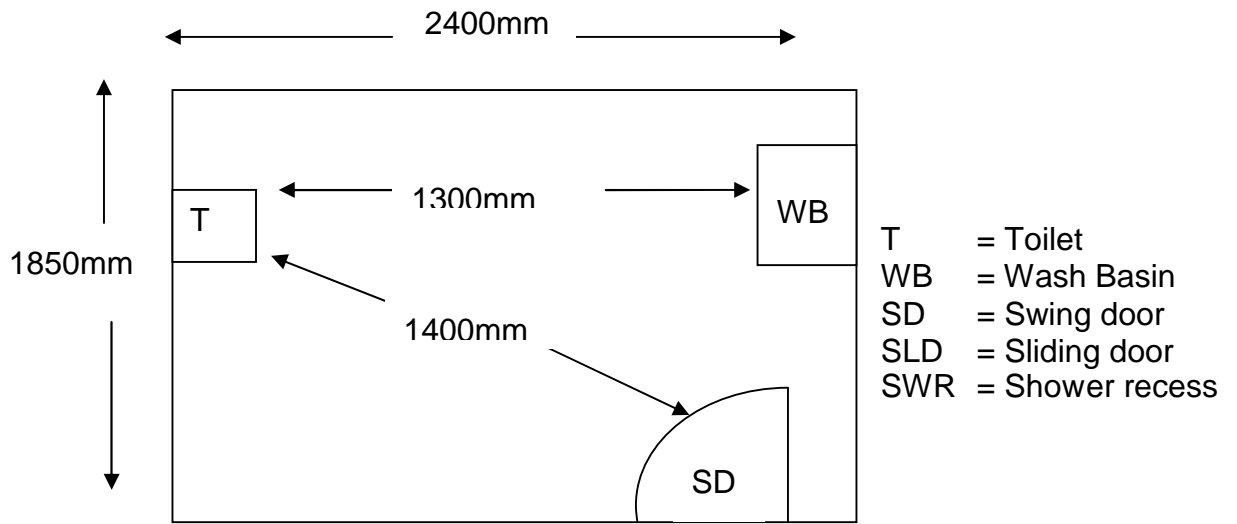
Signage: Clear signage on door.

Door: 820mm wide swing door with 'D' handle and light to operate. There is a 1480mm clearance externally and internally on the latch side.

Pan height: 470mm.

Basin height: 800mm with good knee clearance.

Lighting: The light switch is at seating height.



Accessible rooms: There are two accessible, self-catering and non-smoking suites available with accessible parking.

Emergency: Emergency maps will be included in compendium located in each room.

Access to rooms: Access to the rooms is via a barrier free concrete path of 1400mm. Wheelchair access (Y++)

Accessible rooms:

Door: The swing door has a lever handle and is 920mm wide with a key entry. The door is light to open and slow to close. There is a 500mm clearance on the latch side of the door.

Room: The rooms have 2 bedrooms a lounge area and a kitchen area. The light switches are at sitting height. There is a tiled floor throughout the unit.

Kitchen area: The kitchen bench tops are at sitting height. Wheelchair circulation of 1000mm might be difficult (Y).

Lounge: The lounge area has a 800mm wide door that leads to a patio. The seating is firm with armrests and backrests at a sitting height of 450mm. Wheelchair access (Y+).

Bed: The main bedroom door is 820mm wide with a lever handle. The double bed is fixed and is 600mm high with an under bed clearance of 270mm. There is a clearance space of 1300mm on one side and 800mm on the other side, with a 1300mm clearance at the base. The second bedroom has two single beds with a 1400mm space between each bed. The beds are firm and the light switches are at sitting height. Wheelchair access (Y+).

Laundry: Washing machine and dryer are in the room.

Bathroom:

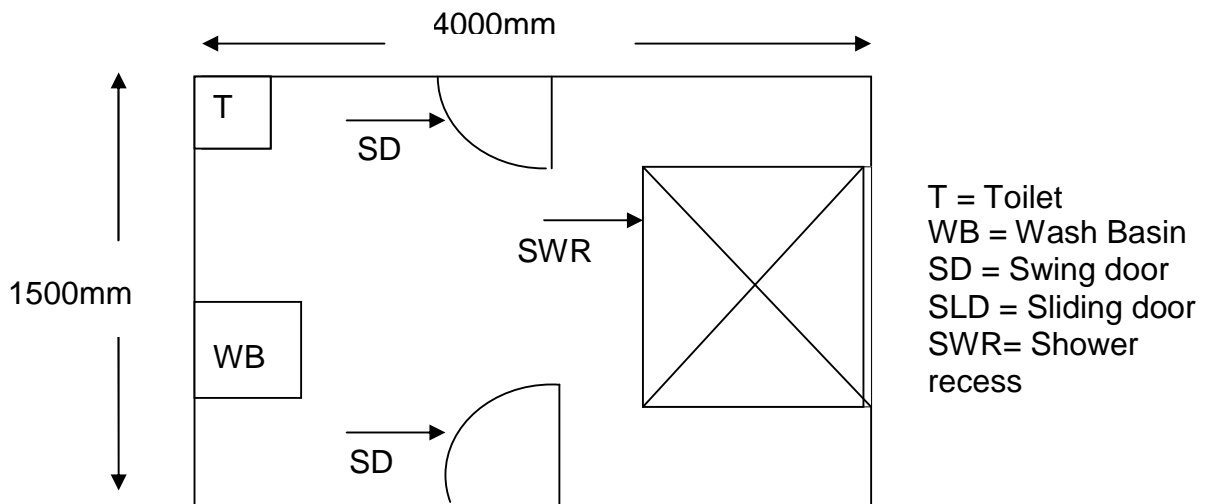
Door: The toilet has two entrances. Both doors are 820mm wide with lever handles. The doors are light to open and slow to close.

Pan height: 480mm high.

Basin height: 860mm.

Shower: The shower recess is 1140mm x 1240mm, with a level access.

Emergency call buttons: No.





Pool:

There are two roman bath style pools available with ample circulation space. Umbrellas are provided for shade.

Location: They can be accessed from different sides. Either from foyer past the restaurant or from the side of the pool via brick paved footpaths. The smaller pool has handrails at the steps for the entry into the water.

Door/Gate: Plastic child safety gate very high and light to open.

Information collected by:

Shire of Broome August 2007

Care has been taken to ensure the accuracy of this information however no guarantee is given that the facility is fully accessible.

Please advise the Shire of Broome of any access changes since publication.

'You're Welcome WA Access Initiative' © Disability Services Commission 2007



The **You're Welcome WA Access Initiative** was developed by the Disability Services Commission in partnership with the Western Australian Local Government Association, Ministerial Advisory Council on Disability, People with Disabilities (WA) Inc, Tourism Western Australia, ACROD WA, NICAN WA and the City of Perth.