

Shire of Broome

Roebuck Bay Hotel

Location: Carnarvon Street, Chinatown

Telephone: (08) 9192 1221

Web: www.roebuckbayhotel.com.au

Accessible parking bay onsite: No.

Closest public transport: Town Bus stop on Carnarvon Street or Dampier Tce

Accessible parking: Ample parking in car park

Pick up / set down bay: There is no designated set down area.

External access: From the car park to reception is a small lip of 100mm and a ramp with 110mm. A wide accessible pathway of 1900mm leads to the reception entrance.

Reception: Entry is by way of wide-open double doors 1660mm. The level entry is barrier free with a lip of 150mm.

Foyer: A spacious tiled foyer with good circulation area for all types of wheelchairs. There are 2 seats with armrests and back posts seating height 420mm. The seating is firm.

Reception: High standing reception desk.

Signage: No

Walkways to Rooms: A wide brick paved path leads to guest bedrooms. The path is 1950mm wide and has a 100mm lip. Otherwise the pathway is level and barriers free (Y++).

Accessible Rooms: downstairs, non smoking

Light: The light switch at entry is 1300mm. The double beds both lights operate independently from each other.

Door: 850mm wide key entry with knob handle. The swing door is light to open and closes manually. There is ample clearance on the arch side and 360mm clearance internally. There is a small threshold to enter. There are no peepholes.

Tea and coffee: There are tea/coffee facilities available at sitting height.

Bed: There is a double & single bed of 600mm height and firm mattresses. There is 160mm clearance under each bed. There is wheelchair access on one side only with 1200mm space between the beds. The beds are not castors and not easily to move.

Room facilities:

- TV, no teletext
- No Volume control telephone
- Lowered light switches
- No remote controlled air conditioning

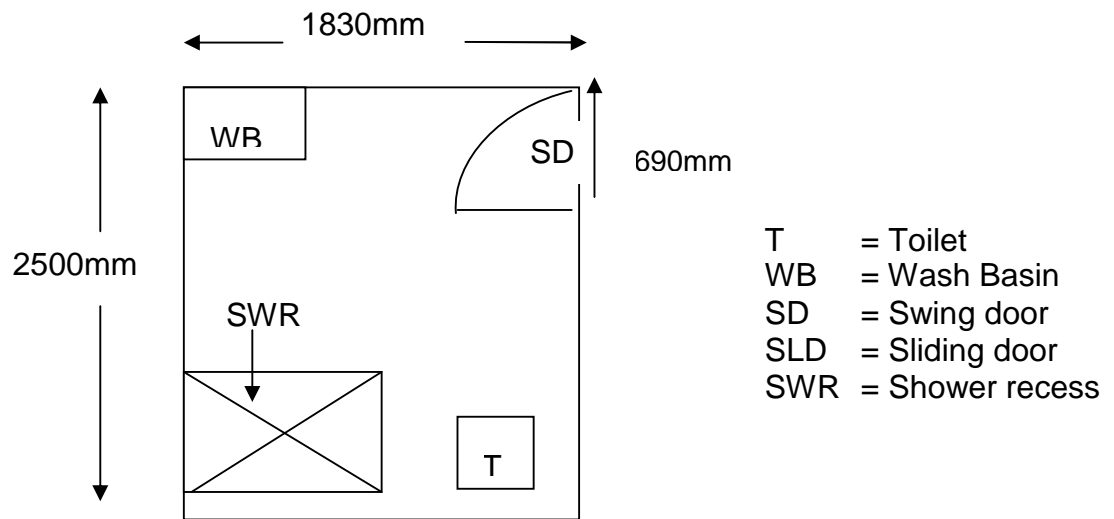
Dining Room: There is a dining room on the ground floor, which is open for lunch and dinner from 12noon – 9pm.

Bathroom: Toilet door is 690mm wide and light to open and slow to close. It has a knob handle and a small snib. The shower floor is recessed 20mm. The light switch is 1330mm high. Wheelchair access rating is (Y).

Pan height: 340mm

Basin height: 780mm

Emergency: No emergency call button and no maps.



Outdoor Swimming Pool: Located on ground floor and adjacent to guest rooms. The access door is 850mm wide and has a high lever handle of 1600mm and is light to open. The pool and spa have a surrounding raised lip of 70mm. The pool has 3 sunken steps, which are wide and easy to access. There is no handrail for support.

Guest Laundry: A guest laundry is located on ground floor level. A 90mm lip leads to an 870mm open door with 400mm clearance on the latch side. The laundry has 3 top load washing machines in 900mm heights and 2 dryers of similar height. All are coin operated. The laundry is open 8am – 3pm. Wheelchair access (Y).

Information collected by:

Shire of Broome August 2007

Care has been taken to ensure the accuracy of this information however no guarantee is given that the facility is fully accessible.

Please advise the Shire of Broome of any access changes since publication.

'You're Welcome WA Access Initiative' © Disability Services Commission 2007



The **You're Welcome WA Access Initiative** was developed by the Disability Services Commission in partnership with the Western Australian Local Government Association, Ministerial Advisory Council on Disability, People with Disabilities (WA) Inc, Tourism Western Australia, ACROD WA, NICAN WA and the City of Perth.