

Shire of Broome

Shire of Broome Administration Centre

Location: Cnr Haas & Weld St, Broome

Opening Hours: Monday to Friday 8.00am – 4.00pm

Telephone: (08) 9191 3456

Web: www.broome.wa.gov.au

Closest accessible parking: There is one accessible parking bay located in the car park adjacent to the foyer entrance.

Pick up / set down bay: There are two undercover bays right outside the front entrance to the reception area. There is also a park bench with back support and a seat height of 500mm.

Closest public transport: The nearest Town Bus stop can be found on Carnarvon Street, near Matso's Broome Brewery, about 7-10 minutes away.

Closest accessible toilet: Onsite.

Signage: There is one very clear and easy to read sign on top of the roof near the entrance. There is also another sign on a big rock located right next to the driveway leading to the foyer.

External access: A barrier free pedestrian pathway of 1800mm leads to the entrance door.

Main entrance: The entrance door is 1460mm wide and opens automatic. There is 1m clearance between security pedestals.

Internal/Foyer: Tiled flooring with ample circulation space for all styles of wheelchairs (Y++). The chairs are firm with armrests and backrests and a seat height of 450mm.

Displays: Displays, brochures and information provided are at sitting height.

Payment / service counters: The counter has two levels and is accessible in standing and sitting height.

Cueing system: Counter service operates by the customer service staff calling 'next please'. There are no visual prompts.

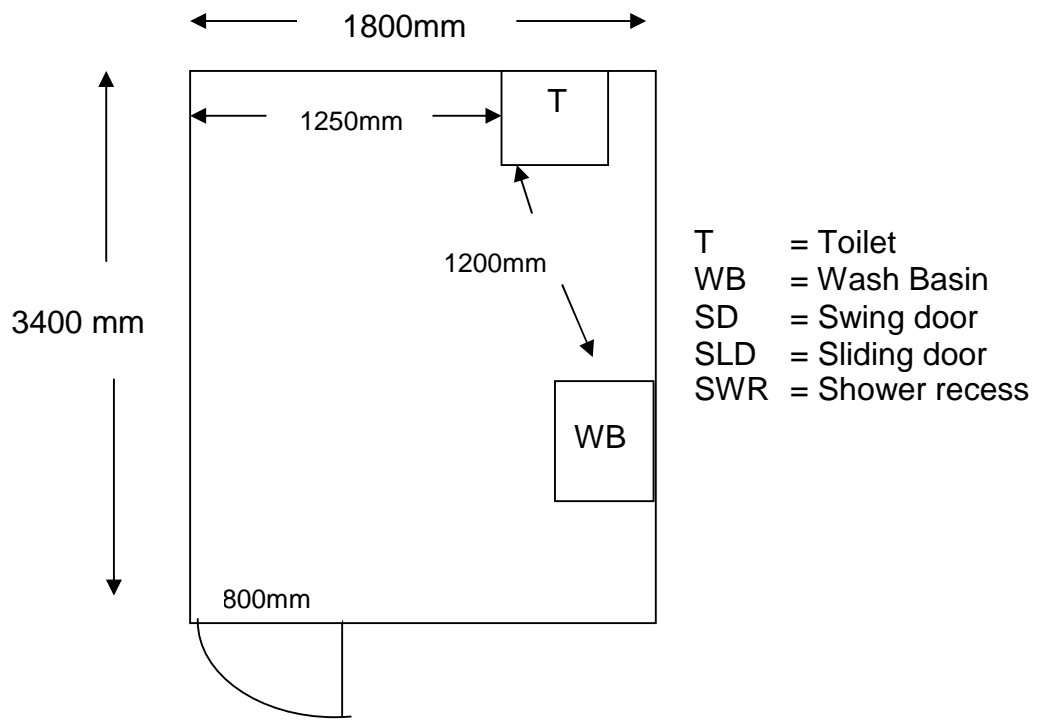
Accessible toilet: The accessible toilet is situated in the foyer area. The unisex toilet is clearly signed. The external access is level and barrier free.

Toilet door: The swing door is 800mm wide with a lever handle and a large snib. The door is heavy to open and slow to close.

Pan height: 490mm

Wash basin: 830mm with good knee clearance.

Lighting: There is a lot of natural light due to a very large window. There is also a light switch accessible from sitting height.



Information collected by:

Shire of Broome August 2007

Care has been taken to ensure the accuracy of this information however no guarantee is given that the facility is fully accessible.
Please advise the Shire of Broome of any access changes since publication.

'You're Welcome WA Access Initiative' © Disability Services Commission 2007



The **You're Welcome WA Access Initiative** was developed by the Disability Services Commission in partnership with the Western Australian Local Government Association, Ministerial Advisory Council on Disability, People with Disabilities (WA) Inc, Tourism Western Australia, ACROD WA, NICAN WA and the City of Perth.