

Town Beach Reserve Public Toilet

Location: Town Beach Reserve Robinson St.

Opening hours: 6:45am to 6:30pm

Cost: Free.

Availability: Unlocked.

Gender: Unisex.

Closest accessible parking: There is one designated disabled parking bay. Otherwise ample parking on nearby Town Beach car park.

Closest public transport: Town Beach Bus stop opposite Seaview Shopping Centre, about 5-7minutes away.

Signage: Clear signage visible from Town Beach car park.

Accessible Toilet:

External access: A barrier free brick paved path 1500mm wide leads to a pedestrian ramp 4.2 degrees (1:13) with handrail.

Toilet door: 810mm manual swing door with 'D' handle light to open outwards. There is a small snib and good wheelchair clearance and ample room.

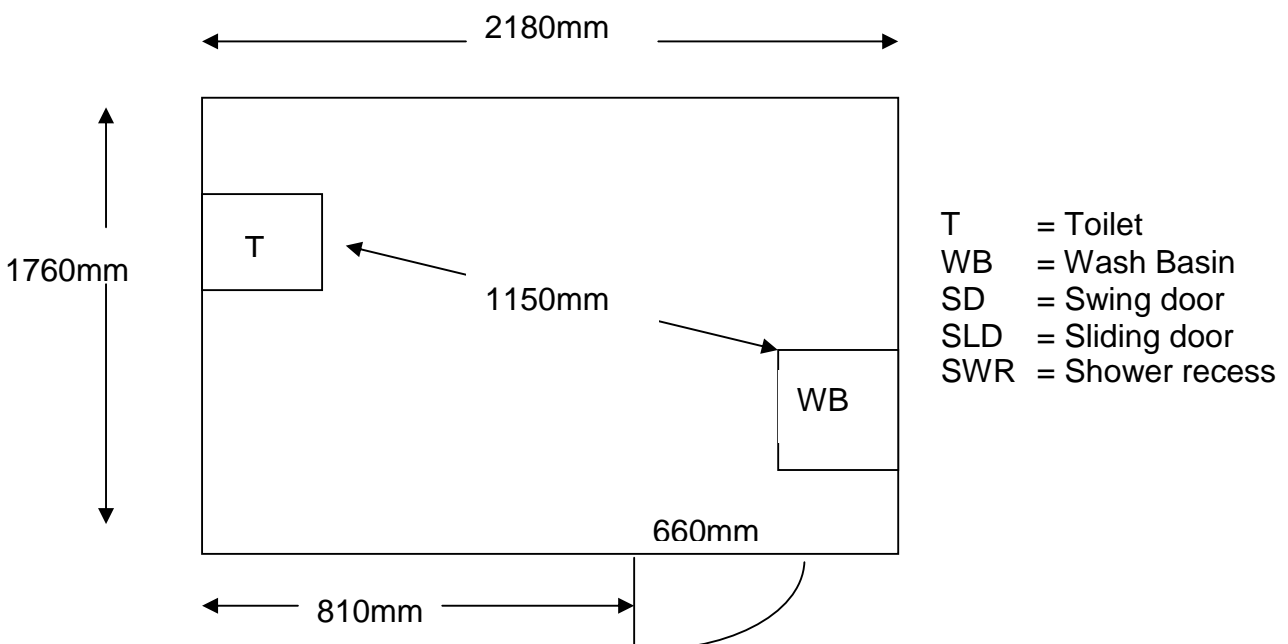
Pan height: 510mm

Basin height: 850 with knee clearance

Baby change table: No

Emergency call bell: No

Lighting: automatic, when door opens.





Information collected by:

Shire of Broome August 2007

Care has been taken to ensure the accuracy of this information however no guarantee is given that the facility is fully accessible.

Please advise the Shire of Broome of any access changes since publication.

'You're Welcome WA Access Initiative' © Disability Services Commission 2007



The **You're Welcome WA Access Initiative** was developed by the Disability Services Commission in partnership with the Western Australian Local Government Association, Ministerial Advisory Council on Disability, People with Disabilities (WA) Inc, Tourism Western Australia, ACROD WA, NICAN WA and the City of Perth.