

## Willie Creek & Old Zoo Café Accessible Toilet

**Location:** At the rear of the buildings, off Challenor Drive, Cable Beach

**Opening hours:** 24 hours

**Closest accessible parking:** There is no designated accessible parking bay in the rear car park.

**Closest public transport:** There is a Town Bus Stop right at the front of the restaurant and showroom.

**Signage:** There is directional signage at the rear car park. However the toilet block is only marked ladies and gentleman and does not have a wheelchair symbol.

**External access:** For access from the front of the Willie Creek Shop and the Old Zoo Café with a wheelchair, it is best to use a path with bridge located between the shop and the toilet blocks. A barrier free pedestrian ramp of 7.6 degrees (1.8) leads to the entrance door.

**Entrance door:** A swing door of 850mm wide is kept open. Wheelchair access (Y++).

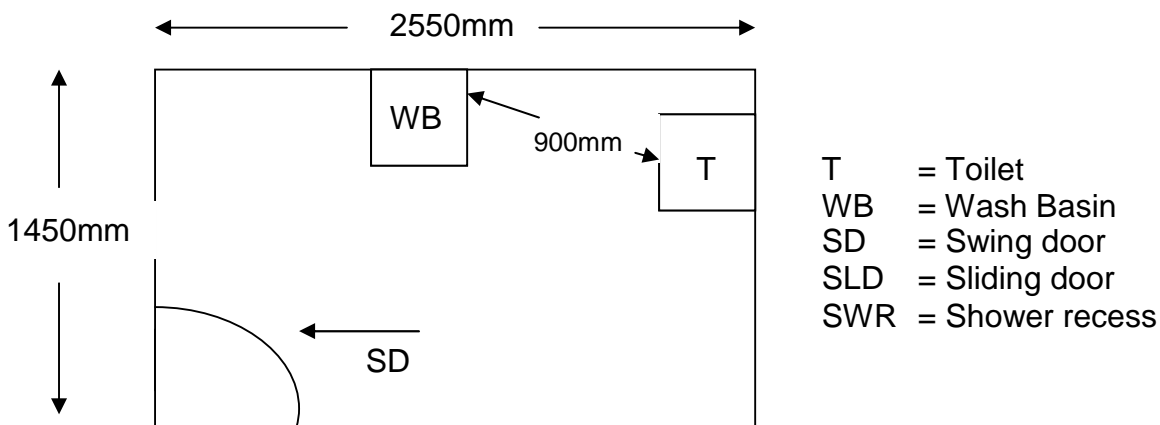
**Toilet door:** The swing door is 810mm wide with a knob handle and a small snib. The door is light to open and easy to close. There is a 1600mm clearance on the latch side. Wheelchair circulation is very good.

**Pan height:** 450mm.

**Basin height:** 860mm with knee clearance.

**Baby change table:** No.

**Lighting:** The light switch is 1400 high.





**Information collected by:**

**Shire of Broome August 2007**

**Care has been taken to ensure the accuracy of this information however no guarantee is given that the facility is fully accessible.**

**Please advise the Shire of Broome of any access changes since publication.**

'You're Welcome WA Access Initiative' © Disability Services Commission 2007



The **You're Welcome WA Access Initiative** was developed by the Disability Services Commission in partnership with the Western Australian Local Government Association, Ministerial Advisory Council on Disability, People with Disabilities (WA) Inc, Tourism Western Australia, ACROD WA, NICAN WA and the City of Perth.