

Scale : 1:15705 (Geographoid)
 MGA : 57S-11E119 SE, 2017037.6N Zone 51 : No. 418206 SE, 321390 7h Zone 5
 Lat/Long : 27°11'4.688" S - 115°50'61.877" E 122°12'40.226" E - 115°50'58.983" E 125.60km by W 188mm

Printed : 09:42 Wed 20/06/2013
 © Western Australian Land Information Authority 2013

This plan is for information purposes only and is not guaranteed. The information may be out of date and should not be relied upon without further verification from the original documents. Where the information is being used for legal purposes then the original documents must be examined for all legal requirements.

11121 TACOMI Zonati, Zone De P, B, C, D, E, F, G, H, I, J, K, L, M, N, O, P, Q, R, S, T, U, V, W, X, Y, Z, AA, AB, AC, AD, AE, AF, AG, AH, AI, AJ, AK, AL, AM, AN, AO, AP, AQ, AR, AS, AT, AU, AV, AW, AX, AY, AZ, BA, BB, BC, BD, BE, BF, BG, BH, BI, BJ, BK, BL, BM, BN, BO, BP, BQ, BR, BS, BT, BU, BV, BW, BX, BY, BZ, CA, CB, CC, CD, CE, CF, CG, CH, CI, CJ, CK, CL, CM, CN, CO, CP, CQ, CR, CS, CT, CU, CV, CW, CX, CY, CZ, DA, DB, DC, DD, DE, DF, DG, DH, DI, DJ, DK, DL, DM, DN, DO, DP, DQ, DR, DS, DT, DU, DV, DW, DX, DY, DZ, EA, EB, EC, ED, EE, EF, EG, EH, EI, EJ, EK, EL, EM, EN, EO, EP, EQ, ER, ES, ET, EU, EV, EW, EX, EY, EZ, FA, FB, FC, FD, FE, FF, FG, FH, FI, FJ, FK, FL, FM, FN, FO, FP, FQ, FR, FS, FT, FU, FV, FW, FX, FY, FZ, GA, GB, GC, GD, GE, GF, GG, GH, GI, GJ, GK, GL, GM, GN, GO, GP, GQ, GR, GS, GT, GU, GV, GW, GX, GY, GZ, HA, HB, HC, HD, HE, HF, HG, HH, HI, HJ, HK, HL, HM, HN, HO, HP, HQ, HR, HS, HT, HU, HV, HW, HX, HY, HZ, IA, IB, IC, ID, IE, IF, IG, IH, II, IJ, IK, IL, IM, IN, IO, IP, IQ, IR, IS, IT, IU, IV, IW, IX, IY, IZ, JA, JB, JC, JD, JE, JF, JG, JH, JI, JJ, JK, JL, JM, JN, JO, JP, JQ, JR, JS, JT, JU, JV, JW, JX, JY, JZ, KA, KB, KC, KD, KE, KF, KG, KH, KI, KJ, KK, KL, KM, KN, KO, KP, KQ, KR, KS, KT, KU, KV, KW, KX, KY, KZ, LA, LB, LC, LD, LE, LF, LG, LH, LI, LJ, LK, LL, LM, LN, LO, LP, LQ, LR, LS, LT, LU, LV, LW, LX, LY, LZ, MA, MB, MC, MD, ME, MF, MG, MH, MI, MJ, MK, ML, MM, MN, MO, MP, MQ, MR, MS, MT, MU, MV, MW, MX, MY, MZ, NA, NB, NC, ND, NE, NF, NG, NH, NI, NJ, NK, NL, NM, NN, NO, NP, NQ, NR, NS, NT, NU, NV, NW, NX, NY, NZ, OA, OB, OC, OD, OE, OF, OG, OH, OI, OJ, OK, OL, OM, ON, OO, OP, OQ, OR, OS, OT, OU, OV, OW, OX, OY, OZ, PA, PB, PC, PD, PE, PF, PG, PH, PI, PJ, PK, PL, PM, PN, PO, PP, PQ, PR, PS, PT, PU, PV, PW, PX, PY, PZ, QA, QB, QC, QD, QE, QF, QG, QH, QI, QJ, QK, QL, QM, QN, QO, QP, QQ, QR, QS, QT, QU, QV, QW, QX, QY, QZ, RA, RB, RC, RD, RE, RF, RG, RH, RI, RJ, RK, RL, RM, RN, RO, RP, RQ, RR, RS, RT, RU, RV, RW, RX, RY, RZ, SA, SB, SC, SD, SE, SF, SG, SH, SI, SJ, SK, SL, SM, SN, SO, SP, SQ, SR, SS, ST, SU, SV, SW, SX, SY, SZ, TA, TB, TC, TD, TE, TF, TG, TH, TI, TJ, TK, TL, TM, TN, TO, TP, TQ, TR, TS, TT, TU, TV, TW, TX, TY, TZ, UA, UB, UC, UD, UE, UF, UG, UH, UI, UJ, UK, UL, UM, UN, UO, UP, UQ, UR, US, UT, UY, UZ, VA, VB, VC, VD, VE, VF, VG, VH, VI, VJ, VK, VL, VM, VN, VO, VP, VQ, VR, VS, VT, VU, VV, VW, VX, VY, VZ, WA, WB, WC, WD, WE, WF, WG, WH, WI, WJ, WK, WL, WM, WN, WO, WP, WQ, WR, WS, WT, WU, WV, WW, WX, WY, WZ, XA, XB, XC, XD, XE, XF, XG, XH, XI, XJ, XK, XL, XM, XN, XO, XP, XQ, XR, XS, XT, XU, XV, XW, XX, XY, XZ, YA, YB, YC, YD, YE, YF, YG, YH, YI, YJ, YK, YL, YM, YN, YO, YP, YQ, YR, YS, YT, YU, YV, YW, YX, YY, YZ, ZA, ZB, ZC, ZD, ZE, ZF, ZG, ZH, ZI, ZJ, ZK, ZL, ZM, ZN, ZO, ZP, ZQ, ZR, ZS, ZT, ZU, ZV, ZW, ZX, ZY, ZZ



+ A 302560
 Lot 65

FIELD BY LANDGATE
IN DIGITAL FORM ONLY

TYPE: LANDGATE
PURPOSE: SUBDIVISION
PLAN: LOT 450

DISTRICT: DUMFRIES
MUNICIPALITY: DUMFRIES
LOCAL AUTHORITY: DUMFRIES
LOCALITY: DUMFRIES

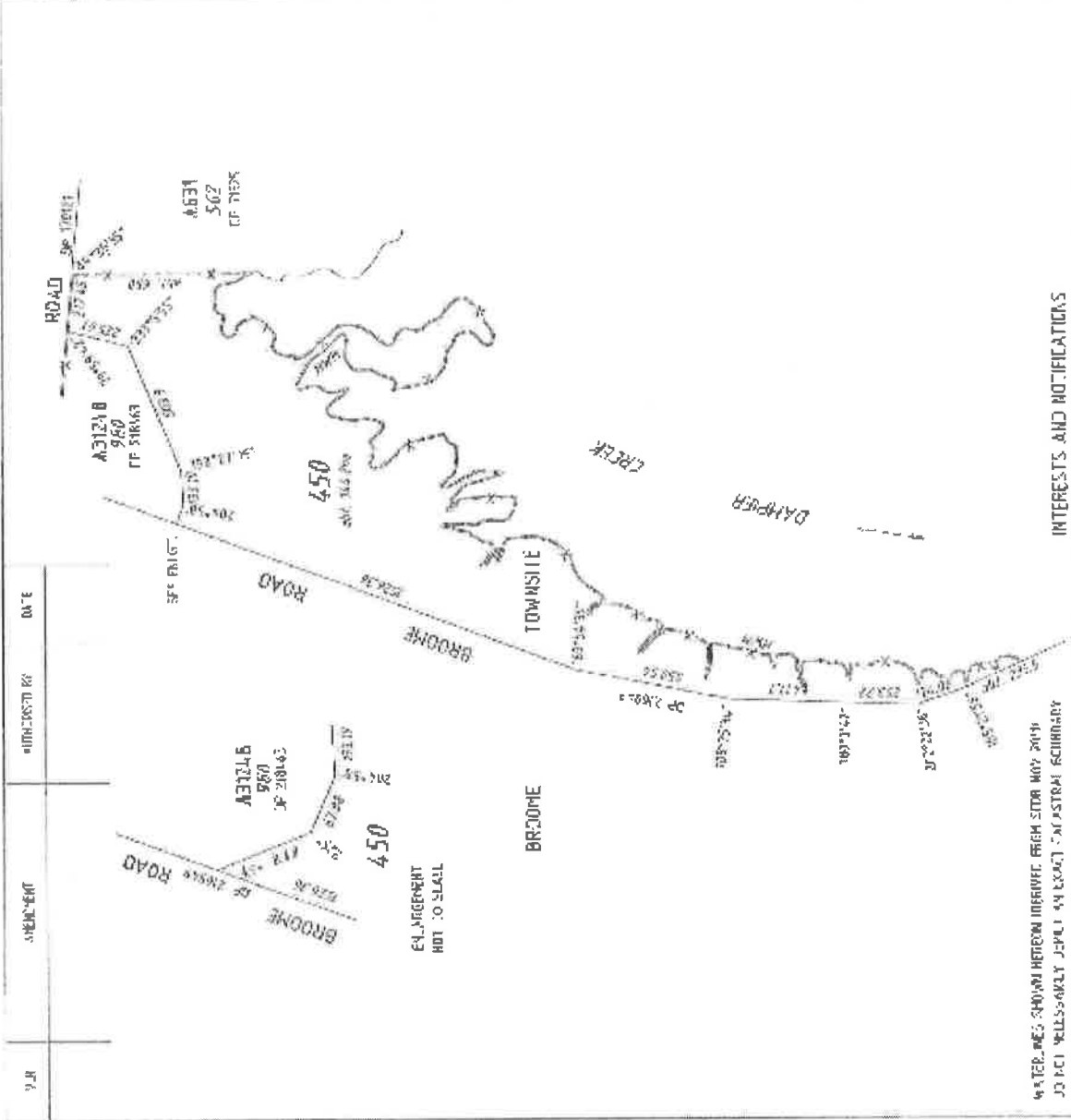
SCALE: 1:15000
DATE: 15/02/2012

SUBJECT TO SURVEY
NOT FOR ALIENATION PURPOSES

LANDGATE
LANDGATE SURVEYS
LANDGATE ENGINEERING
LANDGATE CONSULTANTS
LANDGATE PROJECTS
LANDGATE SERVICES

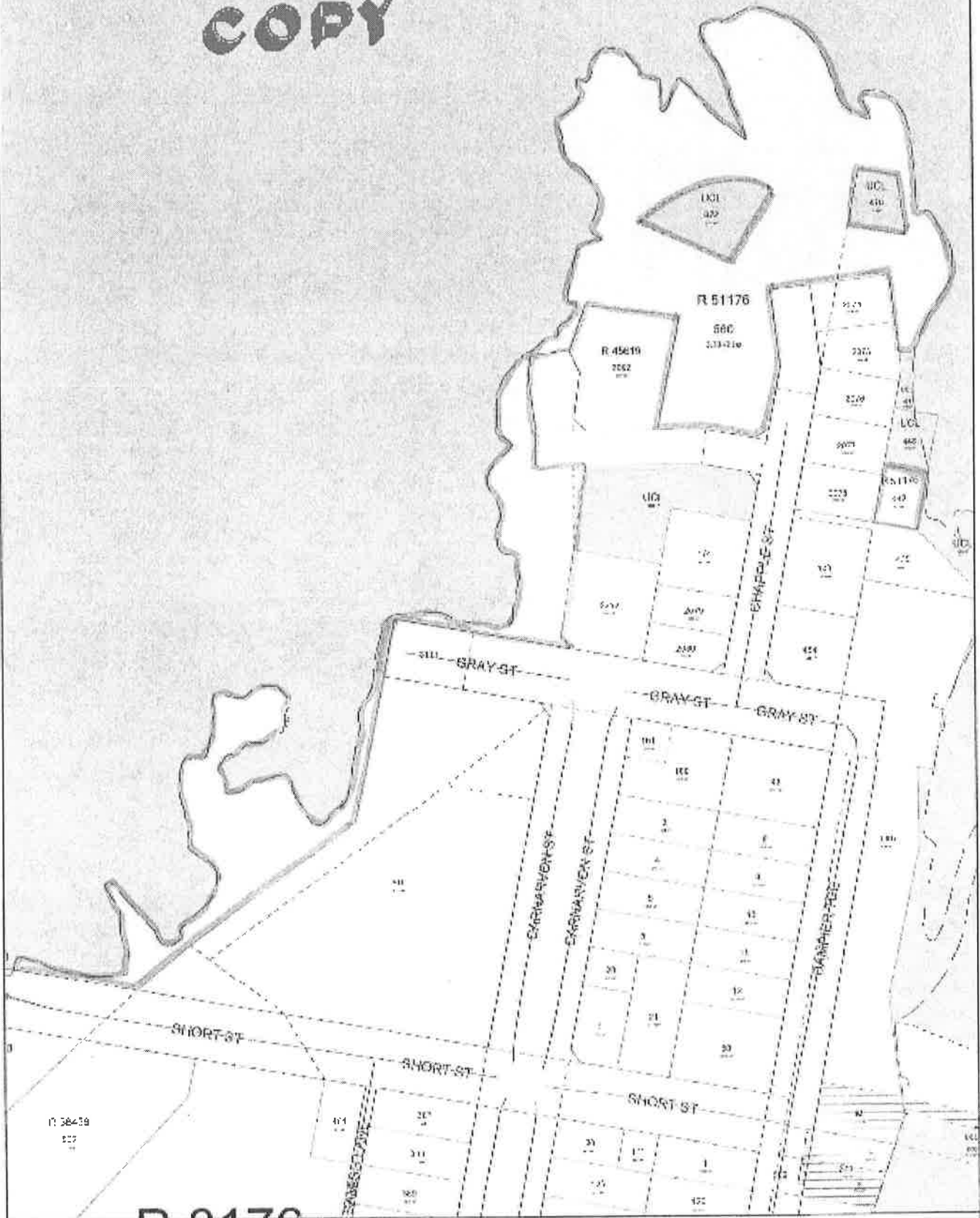


DEPOSITED PLAN
72928
S-PT 1 OF 1



YEAR	INTEREST	DATE	INTERESTS AND NOTIFICATIONS
			STATION REFERENCE
			SECTION 2, TOWNSHIP 3, SUBDIVISION B OF THE MATINE TITLE ACT RESERVE LAND USE AGREEMENT LOCAL GOVERNMENT AGREEMENT 2007 (2007)
			REQUEST MEMBERS OF THE LOCAL GOVERNMENT
			LOT 450
			DATE: 15/02/2012

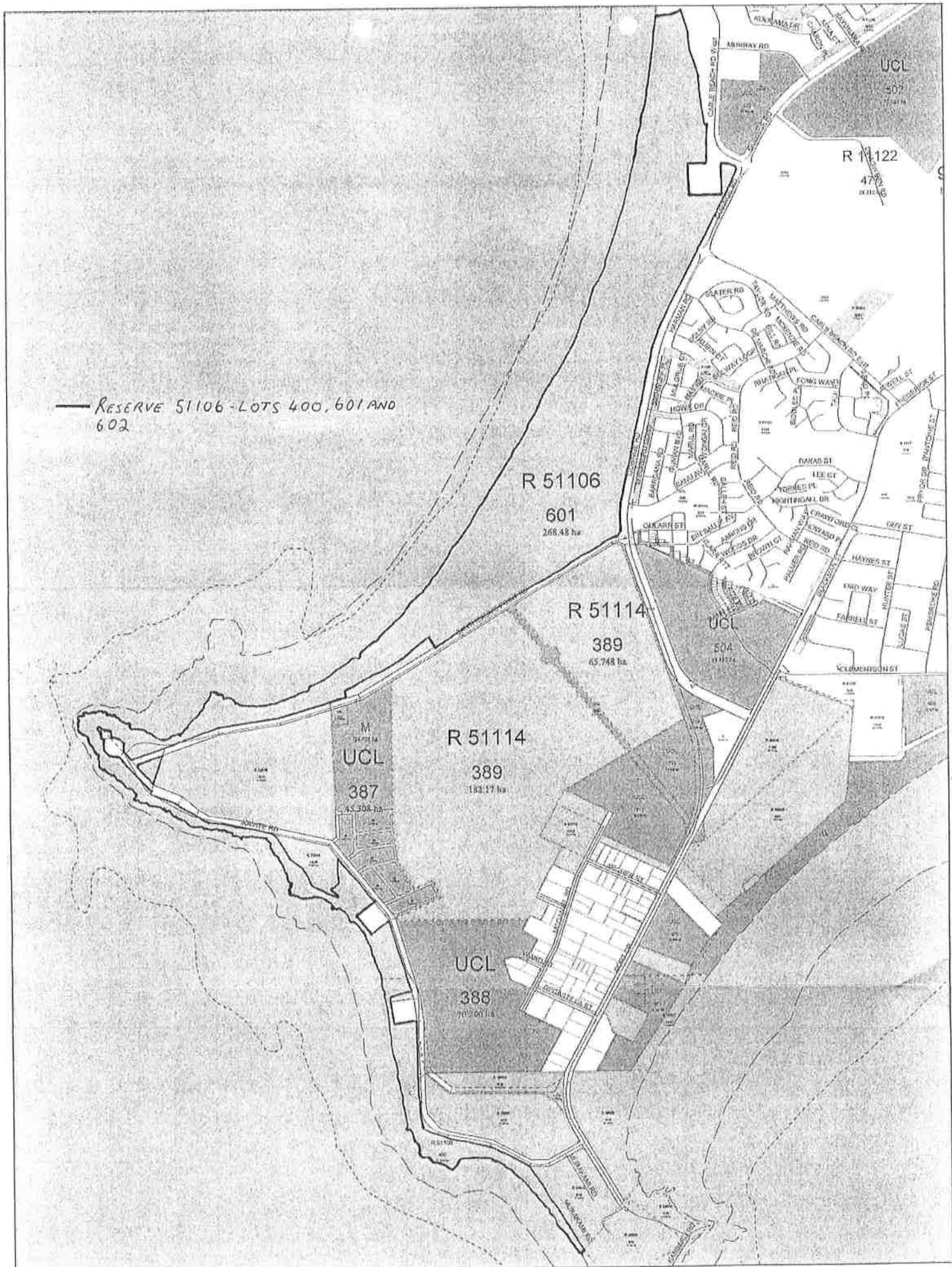
COPY



Scale: 1:1000 (approx)
Map: 85-41947.43, 86-476584, 87-51737-120, 24-91-8018133.4N, Zone 51
Lat/Lng: 121°12'38.280" E, 17°57'13.517" S, 122°14'44.603" E, 17°56'51.828" S, 1936 m by W 163 m

File id: 1500 Wed 6 Jul 2011
© 2011 Australian Land Information Agency 2012

This product is for information purposes only and is not guaranteed. The information may be out of date and should not be relied upon without further verification from the original document. Where the information is being used for legal purposes then the original documents should be used for all legal requirements.



RESERVE 51106 - LOTS 400, 601 AND 602

R 51106
601
268.42 ha

R 51114
389
65.748 ha

R 51114
389
183.17 ha

UCL
388
70.001 ha

M
UCL
387
45.300 ha