

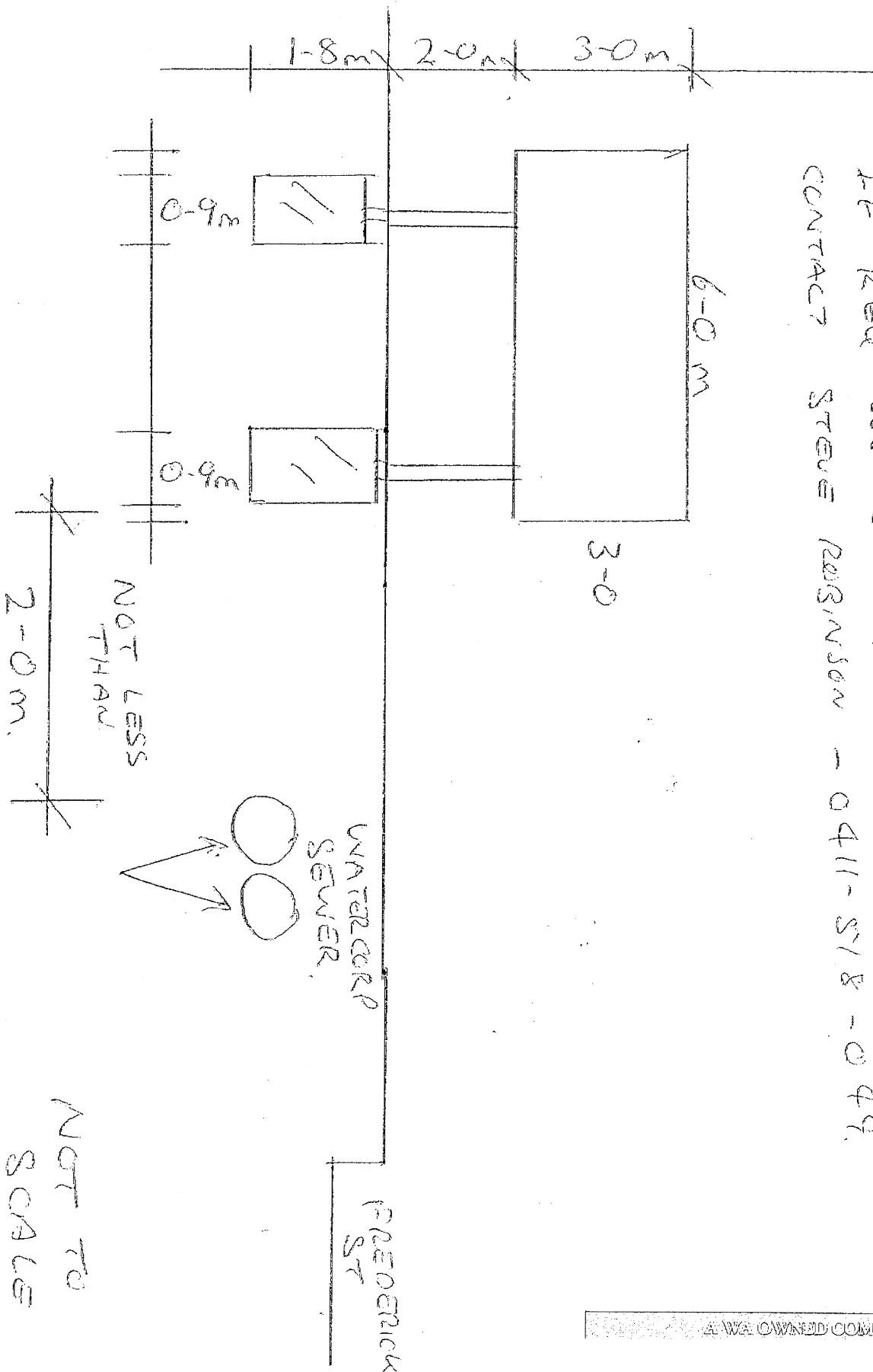
Billboard location

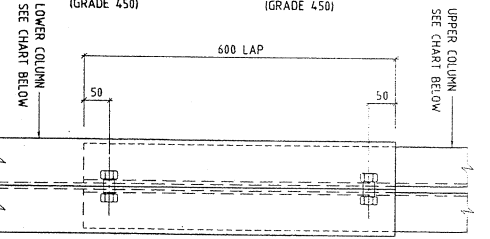
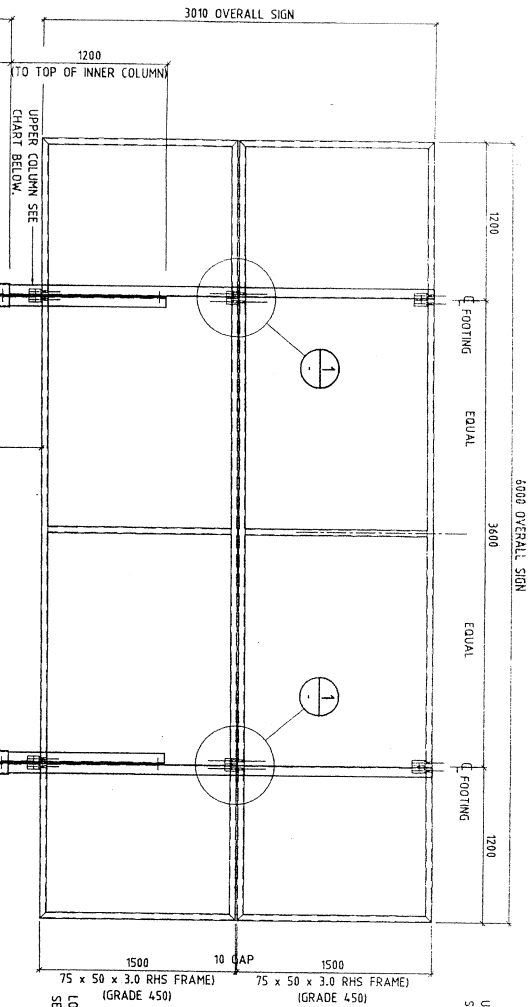
| Lot No. | Area (m²) | Lot No. | Area (m²) | Lot No. | Area (m²) |
|---------|-----------|---------|-----------|---------|-----------|
| 1731 | 1083m² | 1732 | 1106m² | 1733 | 874m² |
| 1734 | 807m² | 1735 | 703m² | 1736 | 703m² |
| 1737 | 1008m² | 1738 | 708m² | 1739 | 1008m² |
| 1740 | 850m² | 1741 | 850m² | 1742 | 850m² |
| 1743 | 811m² | 1744 | 708m² | 1745 | 1758m² |
| 1746 | 819m² | 1747 | 819m² | 1748 | 819m² |
| 1749 | 819m² | 1750 | 819m² | 1751 | 811m² |
| 1752 | 592m² | 1753 | 708m² | 1754 | 819m² |
| 1755 | 819m² | 1756 | 708m² | 1757 | 1008m² |
| 1758 | 819m² | 1759 | 734m² | 1760 | 1008m² |
| 1761 | 830m² | 1762 | 1084m² | 1763 | 1596m² |
| 1764 | 883m² | 1765 | 883m² | 1766 | 832m² |
| 1767 | 819m² | 1768 | 819m² | 1769 | 819m² |
| 1770 | 708m² | 1771 | 708m² | 1772 | 708m² |
| 1773 | 819m² | 1774 | 819m² | 1775 | 819m² |
| 1776 | 819m² | 1777 | 819m² | 1778 | 819m² |
| 1779 | 819m² | 1780 | 819m² | 1781 | 819m² |
| 1782 | 819m² | 1783 | 819m² | 1784 | 819m² |
| 1785 | 819m² | 1786 | 819m² | 1787 | 819m² |
| 1788 | 819m² | 1789 | 819m² | 1790 | 819m² |
| 1791 | 819m² | 1792 | 819m² | 1793 | 819m² |
| 1794 | 819m² | 1795 | 819m² | 1796 | 819m² |
| 1797 | 819m² | 1798 | 819m² | 1799 | 819m² |
| 1800 | 819m² | 1801 | 819m² | 1802 | 819m² |
| 1803 | 819m² | 1804 | 819m² | 1805 | 819m² |
| 1806 | 819m² | 1807 | 819m² | 1808 | 819m² |
| 1809 | 819m² | 1810 | 819m² | 1811 | 819m² |
| 1812 | 819m² | 1813 | 819m² | 1814 | 819m² |
| 1815 | 819m² | 1816 | 819m² | 1817 | 819m² |
| 1818 | 819m² | 1819 | 819m² | 1820 | 819m² |
| 1821 | 819m² | 1822 | 819m² | 1823 | 819m² |
| 1824 | 819m² | 1825 | 819m² | 1826 | 819m² |
| 1827 | 819m² | 1828 | 819m² | 1829 | 819m² |
| 1830 | 819m² | 1831 | 819m² | 1832 | 819m² |
| 1833 | 819m² | 1834 | 819m² | 1835 | 819m² |
| 1836 | 819m² | 1837 | 819m² | 1838 | 819m² |
| 1839 | 819m² | 1840 | 819m² | 1841 | 819m² |
| 1842 | 819m² | 1843 | 819m² | 1844 | 819m² |
| 1845 | 819m² | 1846 | 819m² | 1847 | 819m² |
| 1848 | 819m² | 1849 | 819m² | 1850 | 819m² |
| 1851 | 819m² | 1852 | 819m² | 1853 | 819m² |
| 1854 | 819m² | 1855 | 819m² | 1856 | 819m² |
| 1857 | 819m² | 1858 | 819m² | 1859 | 819m² |
| 1860 | 819m² | 1861 | 819m² | 1862 | 819m² |
| 1863 | 819m² | 1864 | 819m² | 1865 | 819m² |
| 1866 | 819m² | 1867 | 819m² | 1868 | 819m² |
| 1869 | 819m² | 1870 | 819m² | 1871 | 819m² |
| 1872 | 819m² | 1873 | 819m² | 1874 | 819m² |
| 1875 | 819m² | 1876 | 819m² | 1877 | 819m² |
| 1878 | 819m² | 1879 | 819m² | 1880 | 819m² |
| 1881 | 819m² | 1882 | 819m² | 1883 | 819m² |
| 1884 | 819m² | 1885 | 819m² | 1886 | 819m² |
| 1887 | 819m² | 1888 | 819m² | 1889 | 819m² |
| 1890 | 819m² | 1891 | 819m² | 1892 | 819m² |
| 1893 | 819m² | 1894 | 819m² | 1895 | 819m² |
| 1896 | 819m² | 1897 | 819m² | 1898 | 819m² |
| 1899 | 819m² | 1900 | 819m² | | |

WA BILLBOARDS
 OUTDOOR MEDIA SUPPLIERS

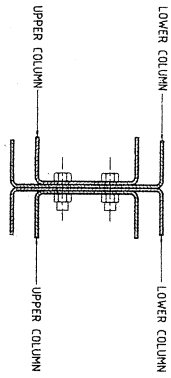
Admin: PO BOX 205 MORLEY WA 6943
 Telephone: 0411 518 049 Facsimile: (08) 9207 2708
 ABN 70 547 812 663 ACN 009 386 112

WA BILLBOARDS WILL LOCATE POSITION
 OF LINES AND REMAIN NOT LESS THAN
 2-0 m FROM THE SERVICE
 IF REQ WE CAN INCREASE THIS DISTANCE.
 CONTACT STEVE ROBINSON - 0411-518-049.

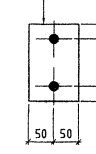




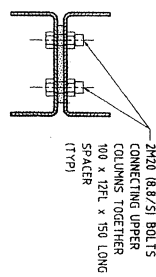
SPLICE DETAIL



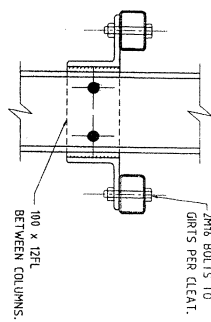
PLAN ON SPLICE LOWER/UPPER COLUMNS



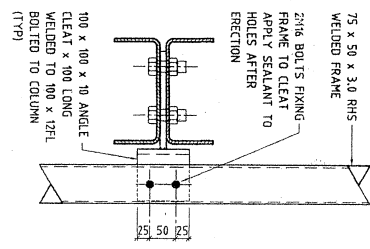
SPACER DETAIL UPPER COLUMN



DOUBLE SIDED GIRTS CLEAT



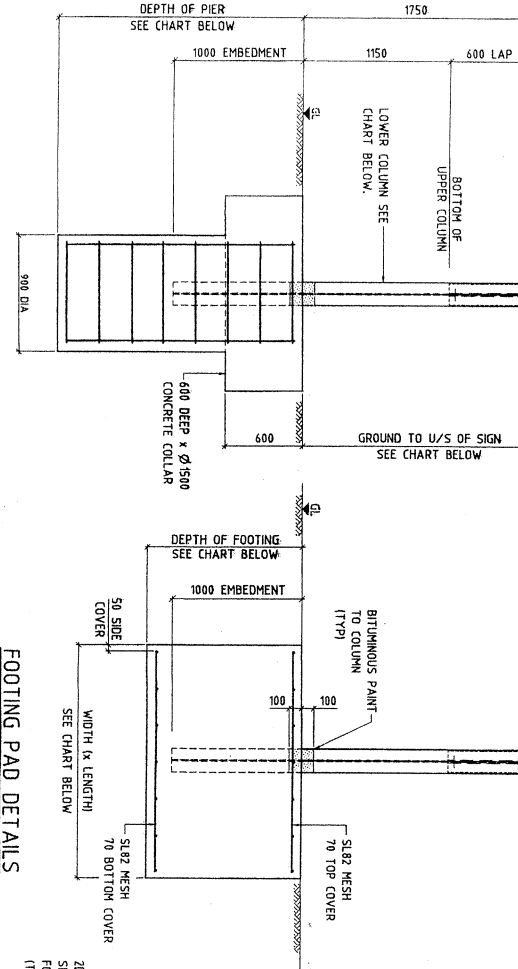
SINGLE SIDED GIRTS CLEAT



PLAN ON GIRTS CLEAT

CARNegie ASSOCIATES PTY LTD
CONSULTING ENGINEERS
Mark O'Grady
B.Eng. (Mech. Engng), M.Eng.

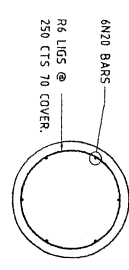
DESIGN WIND LOAD TO ASTRO 2



BORED PIER DETAILS

FOOTING PAD DETAILS
1:20 (OPTIONAL TO BORED PIER)

REAR ELEVATION



PLAN ON PIER

CYCLONIC REGION 'D' - WIND TERRAIN CATEGORY 2

| GROUND TO U/S OF SIGN | COLUMNS (GRADE 450 DURAGAL CHANNEL) | PAD FOOTINGS | PIER FOOTINGS |
|-----------------------|-------------------------------------|---------------------|---------------|
| UPPER COLUMN | LOWER COLUMN | WIDTH | LENGTH |
| 2000 | 2No. 200 x 75 x 6CC | 2No. 300 x 90 x 6CC | 1800 |
| | | | 3300 |
| | | | 900 |
| | | | 2400 |

CYCLONIC REGION 'C' - WIND TERRAIN CATEGORY 2

| GROUND TO U/S OF SIGN | COLUMNS (GRADE 450 DURAGAL CHANNEL) | PAD FOOTINGS | PIER FOOTINGS |
|-----------------------|-------------------------------------|---------------------|---------------|
| UPPER COLUMN | LOWER COLUMN | WIDTH | LENGTH |
| 2000 | 2No. 200 x 75 x 5CC | 2No. 250 x 90 x 6CC | 1800 |
| | | | 2700 |
| | | | 900 |
| | | | 2000 |

CARNegie ASSOCIATES PTY LTD
STRUCTURAL DESIGN AND DRAFTING SPECIALISTS
Unit 3 48 Heider Road Osborne Park Western Australia 6017
Tel: 08 9244 1311 Fax: 08 9244 1022 Email: info@carnegie.com.au

| | | | |
|-------------|---------------------------------------|-------------|------------|
| DESIGNED | M.O.G. | CHECKED | J.F.S. |
| DRAWN | M.O.G. | APPROVED | J.F.S. |
| DATE | 01/07/02 | DATE | 26/6/02 |
| PROJECT | CYCLONIC AREA - TWO POLE MOUNTED SIGN | SCALE | 1:20 & 1:5 |
| CUSTOMER | WA BILLBOARDS | DRAWN BY | 1 |
| PROJECT NO. | 4600 LONG x 3010 HIGH SIGN | CHECKED BY | 0 |
| DATE | | APPROVED BY | |

11 JUN 2007
SHIRE OF BROOME RECEIVED