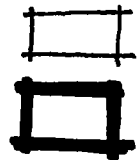


ATTACHMENT 1:

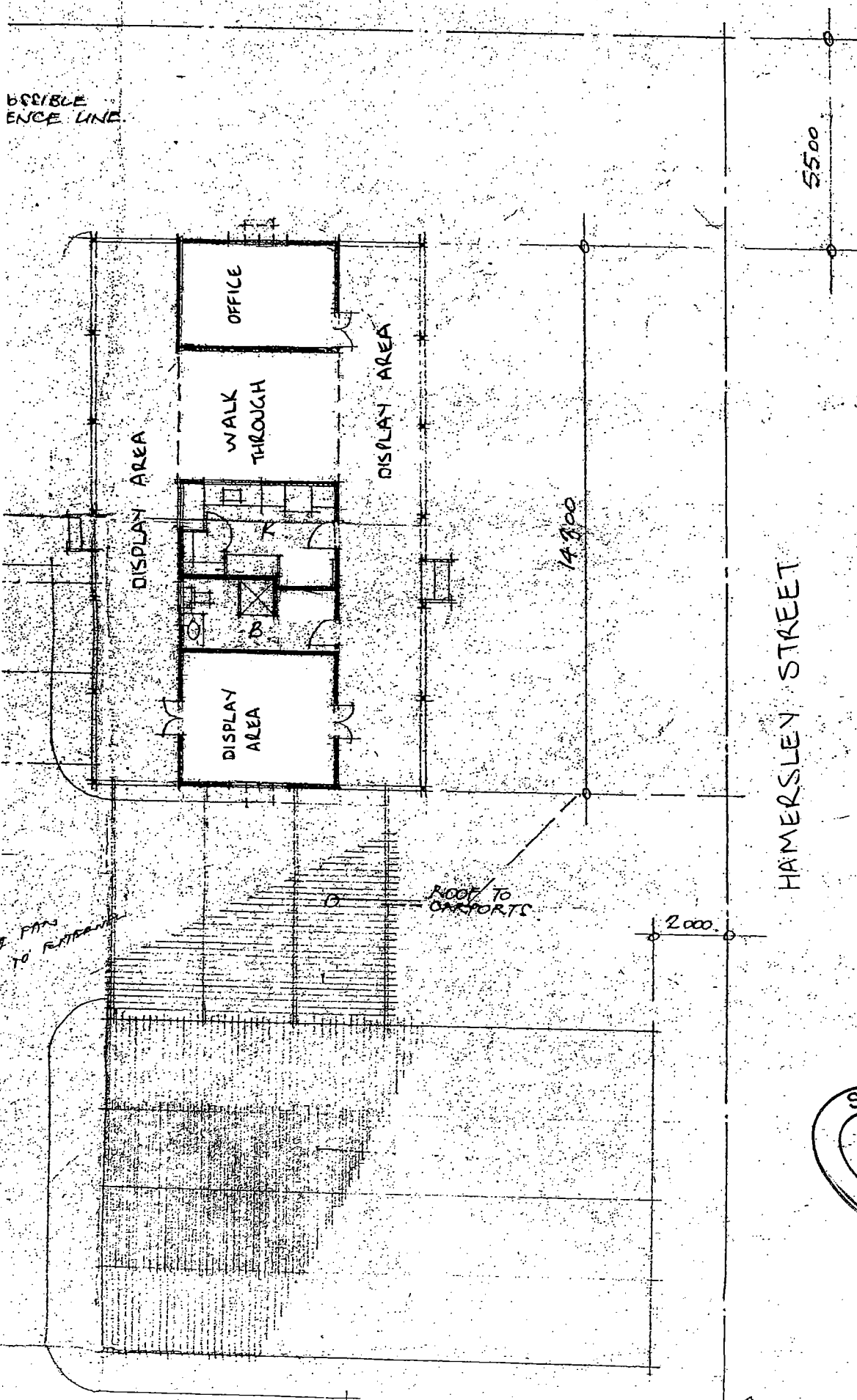
Aerial photograph – 19 Hamersley Street, showing car parking in road reserve in front of Unit 2



N
↑

 PARKING SPACE
UNIT 1

VISIBLE
ENCE LINE



HAMERSLEY STREET

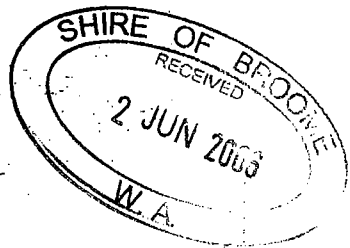
5500

14,200

2000

ROOF TO
SUPPORTS

E. PART
TO RETAIN



**Extra submission re signage for
Denise Walker Art, 19 Hamersley St Broome**

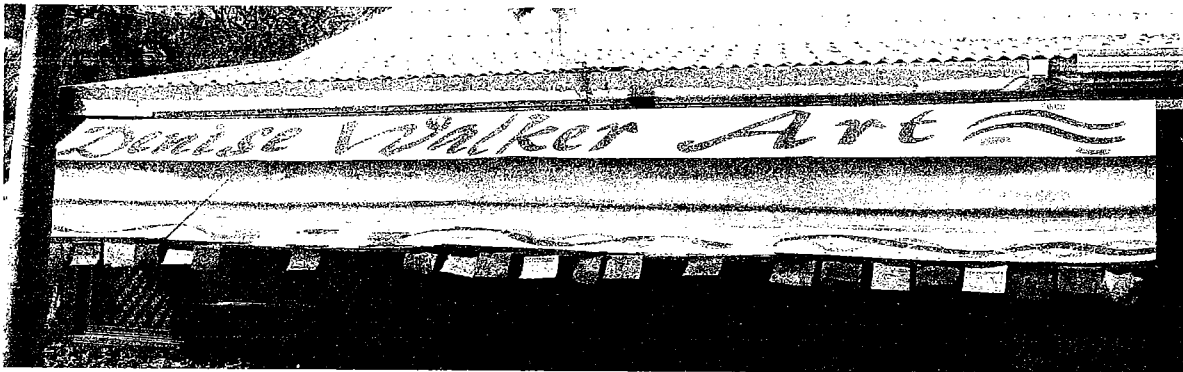
Open sign 70 x 50 cm



Gallery Open sign 120 x 50 cm



Left Louver sign on the house 550 x 120 cm



Right Louver sign on the house 550 x 120 cm

