

Community Safety Plan

2021 - 2025





OUR PLAN

The Shire of Broome aspires for the District to be a safe and enjoyable place for everyone to live, work and visit.

This Plan guides the Shire to provide the foundation for a safe and thriving community; and inform the action undertaken by the Shire in partnership with agencies and the community to reduce the risk of crime and anti-social behaviour and improve community perceptions of safety.

In response to resident and business and visitor concerns, the *Community Safety Plan 2016 – 2019* was developed to stimulate action, however safety and security continue to remain a key concern for the community.

The relaxed pace of life and laid-back attitude of Broome are appealing – yet continue to be impacted by key issues including excessive drug and alcohol consumption and related harm; anti-social behaviour in public places; and rates of youth offending and recidivism.

The *Community Safety Plan 2021 – 2025* continues the work of the first plan – ensuring issues impacting the community are addressed and the Shire contributes to a shared community safety solution.

This plan was developed based on consultation with the community and key stakeholders including WA Police, service providers and community groups.

The actions respond to key themes and areas of need identified through this process – and acknowledge the fact not one group is solely responsible for addressing community safety concerns and crime prevention throughout the Shire.

Aboriginal and Torres Strait Islander peoples should be aware that this publication may contain the images of people who have passed away.

SNAPSHOT – COMMUNITY SAFETY AND CRIME IN BROOME

The Shire commenced a consultation and review process in 2019 to develop the Community Safety Plan 2021 - 2025.

This process included several methods to gain an understanding of the prevailing perceptions, concerns and priorities of the community in relation to community safety and crime prevention.

Review

Officers conducted a review of all actions contained within the Community Safety Plan 2016 – 2019 with those which remained relevant being considered as ongoing actions.

Community Surveying

The Shire of Broome conducted a Community Perceptions Survey in June 2020, which was completed by 1,046 respondents. The survey results identified that **Safety and Security** was a top community priority, and provided a significant amount of comments and feedback on this theme.

Informal Engagement

Twelve community picnics were held across various neighbourhoods in Broome in 2019.

These picnics were aimed at providing an opportunity for community engagement; whilst building capacity and resilience for community members to increase safety and security awareness.

These picnics were supported by WA Police who attended to provide advice to community members on community safety concerns.



Stakeholder workshop

Key stakeholders, including members from the previous Community Safety Working Group, were invited to attend the workshop as part of targeted community consultation.

The main objectives of the stakeholder workshop included testing priorities and formulating key actions for inclusion in the draft plan.

A variety of stakeholders participated including:

- Shire of Broome (officers and elected members)
- WA Police
- Department of Justice
- Department of Communities
- Kimberley Population Health Unit
- Kullarri Patrol
- Broome Youth and Families Hub
- Broome Visitor Centre
- Paspaley Properties
- Agunya Ltd
- Milliya Rumurra

At the November 2020 Ordinary Meeting of Council, the Shire Council endorsed an 8-week public comment period on the draft Community Safety Plan 2021 – 2025. Between November 4 to December 31, 2020, Shire Officers implemented a range of community engagement activities to advertise this opportunity and seek feedback on the draft Informing Strategies.

Data analysis

The crime statistics analysed and included on the following pages were obtained from the WA Police Force website.

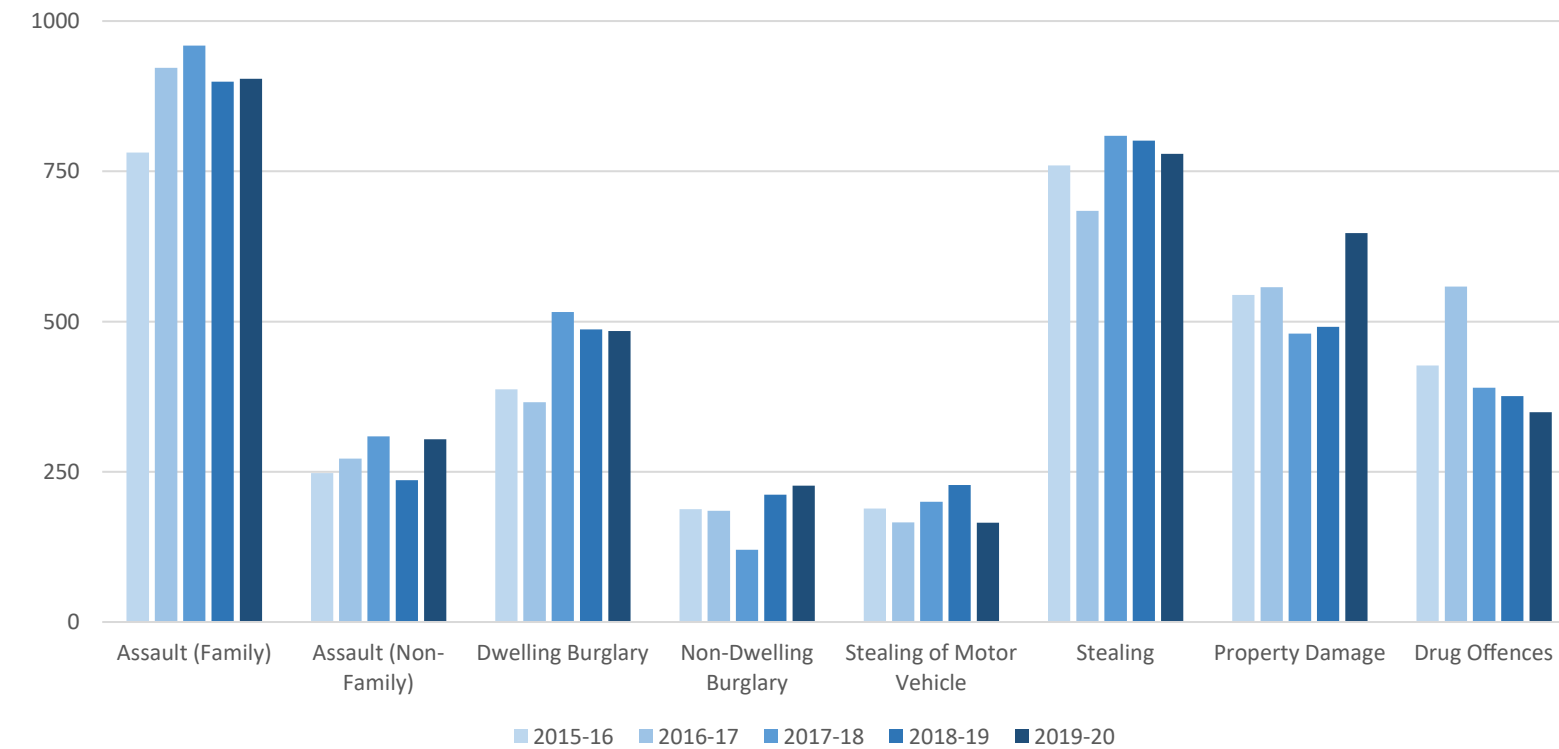
The Shire acknowledges crime statistics are only one measure of community safety and may be influenced by a wide range of factors including, although not limited to:

- Population size
- Infrastructure (such as shopping centres and entertainment precincts)
- Seasonal trends
- The extent to which crime is reported to, and detected by, police
- Changes to offence recording and reporting categories
- Other social, economic, proactive policing or inter-agency strategies

Consideration should be given to these factors when interpreting statistics.

Shire of Broome - Five year crime trends (by crime category)

The following areas are included in calculated crime statistics: Broome, Bilingurr, Cable Beach, Coconut Well, Dampier Peninsula, Djugun, Eight Mile Beach, Lagrange, Minyirr, Morell Park, One Arm Point and Roebuck.

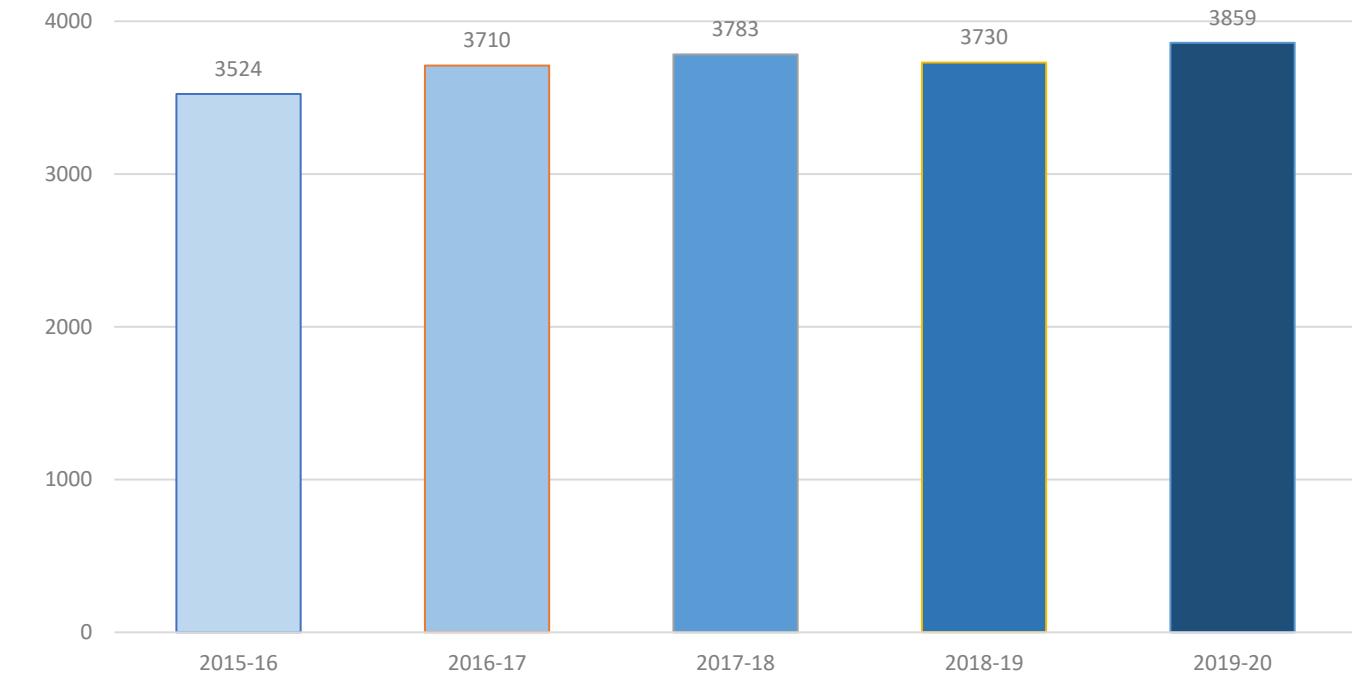


Statistics are sourced from WA Police website <https://www.police.wa.gov.au/>

Shire of Broome - Total number of yearly offences

(Population: 16,222* 2016 Census)

The following areas are included in calculated crime statistics: Broome, Bilingurr, Cable Beach, Coconut Well, Dampier Peninsula, Djugun, Eight Mile Beach, Lagrange, Minyirr, Morrell Park, One Arm Point and Roebuck.



* 1.09% Population growth since 2011

Statistics are sourced from WA Police website <https://www.police.wa.gov.au/>

COMMUNITY SAFETY FORUM

A Community Safety Forum was held at the Broome Civic Centre on December 7, 2020.

The meeting was organised to address concerns around public safety and formed part of the engagement process seeking feedback on the Draft Community Safety Plan 2021-2025.

The Broome community turned out in significant numbers directing questions to a panel consisting of the Shire of Broome president Harold Tracey and regional Government heads from WA Police, Department of Justice, Department of Communities, Department of Education, Department of Health and Kimberley Aboriginal Medical Services.

The forum was also attended by State politicians Ben Wyatt and Zak Kirkup who addressed the community.

The themes that were identified through discussions at the Community Safety Forum have reinforced the following priority areas within the Community Safety Plan 2021-2025 and strengthened the necessity of the actions which address them.

- Alcohol and Drugs
- Anti – Social Behaviour
- Itinerancy
- Youth Crime
- Burglary / Theft
- Civil Leadership

Following the Forum, the Shire of Broome webpage was updated to include information on the Community Safety Forum, including live video footage from the event.

As part of the Community Safety Forum, members of the public were requested to submit questions prior to the evening, as timing did not permit for all pre-submitted questions to be read at the meeting, all questions received were collated and responses sourced. The questions and answers are published on the Shire webpage.

The Forum was valuable in confirming the community’s priorities and key concerns which have been previously articulated through the Community Perceptions survey and targeted engagement on community safety.



OUR PURPOSE

The Shire of Broome exists to deliver affordable and quality Local Government services, for everyone.

We fulfil the following roles and responsibilities to meet local needs:

- Advocate** We are a voice for the local community, promoting local interest in relation to health and safety, climate change, responsible development and more.
- Facilitate** We help to make it possible or easier to meet community needs.
- Fund** We help to fund organisations to deliver essential community services including Broome Visitor Centre, Surf Lifesaving, festivals, events and more.
- Partner** We form strategic alliances with other interest of the community.
- Provide** We directly provide community infrastructure and services.
- Regulate** We ensure compliance with local laws.

OUR ACTIONS

The *Community Safety Plan 2016 – 2019* was informed by the Broome 2040 community consultation and the 2015 Community Perceptions Survey, which identified several issues relating to community safety in the Broome town-site.

Building upon this work, further consultation through 2019 and 2020 has consolidated a list of key priority themes to focus the Shire's efforts in the Community Safety space over the life of this plan.

These are:

- Alcohol consumption and other drugs
- Anti-social behaviour in public places
- Itinerancy and rough camping
- Youth crime and diversionary initiatives
- Burglary / theft / stealing
- Family and domestic violence
- Civic leadership



ACTION / / Alcohol consumption and other drugs

The excessive intake of alcohol continues in public places throughout Broome, and there is also community angst regarding drug use.

DELIVERABLES	TIMEFRAME			
	21/22	22/23	23/24	24/25
Advocate for the implementation of measures to reduce the impact of excessive alcohol consumption. e.g. Banned Drinkers Register Takeaway Alcohol Management System.	●	●	●	●
Advocate for services addressing alcohol and other drug related harm occurring within the Shire.	●	●	●	●
Provide administration support to the Broome Liquor Accord.	●	●	●	●
Facilitate an ongoing dialogue with the Kimberley Regional Group (four local governments) regarding a regional approach to alcohol and other drug related matters.	●	●	●	●
Provide funding for an independent evaluation of the Banned Drinkers Register trial in the Kimberley.	●	●		

ACTION / / Anti-social behaviour in public places

Ongoing anti-social behaviour continues to impact community and businesses. There is concern about the reputational damage posed by the highly visible nature of this behaviour. In the Broome context anti-social behaviour can include abusing people, shouting and swearing, fighting, littering, being drunk and disorderly, loitering, defecating, sleeping in public areas, disrupting events, holding noisy parties and hassling (humbugging) people.

DELIVERABLES	TIMEFRAME			
	21/22	22/23	23/24	24/25
Provide a program of events to activate public open spaces; and strengthen neighbourhood pride and connections.	●	●	●	●
Facilitate a strategic review of the laneway and drainage network.		●		
Advocate for Crime Prevention Through Environmental Design (CPTED) principles to be applied to major infrastructure projects outside of the control of the Shire.	●	●	●	●
Partner with WA Police to provide ongoing monitoring of anti-social behaviour in public places, , including providing access to the Shire’s CCTV network and communicating on a regular basis.	●	●	●	●
Provide an annual lighting upgrade program.	●	●	●	●
Advocate for external funding for CCTV and lighting programs.	●	●	●	●
Provide additional CCTV in public open spaces, with a focus on hot spots for crime and anti social behaviour identified through consultation with WA Police.	●	●	●	●

ACTION / / Anti-social behaviour in public places CONT.

DELIVERABLES	TIMEFRAME			
	21/22	22/23	23/24	24/25
Provide infrastructure and amenity upgrades in line with Crime Prevention Through Environmental Design (CPTED) principles.	●	●	●	●
Advocate for additional police resources to address community safety and crime prevention in the district.	●	●	●	●

ACTION / / Itinerancy and rough camping

The township of Broome experiences periodic influxes of transient visitors from surrounding communities and the Northern Territory. Reasons for visits include treatment for medical conditions, family gatherings, sporting events, bereavement and funerals, visiting people in residential aged care, on dialysis or in prison and the need to get away from pressures at home.

DELIVERABLES	TIMEFRAME			
	21/22	22/23	23/24	24/25
Facilitate information sharing between service providers to improve collaborative outcomes to address itinerancy, including thorough initiatives such as the Broome Vulnerable People Working Group.	●	●	●	●
Partner with State Government agencies, service providers and remote communities to monitor and address itinerancy occurring within the Shire.	●	●	●	●
Advocate for Aboriginal Lands Trust and Malingbarr Aboriginal Corporation to effectively manage land use and public health issues at Kennedy Hill.	●	●	●	●

ACTION / / Youth crime and diversionary initiatives

Youth crime is a key concern for the Broome community and accounts for the majority of contacts made by community members to the Shire about young people . Young people themselves have expressed concern that the actions of a few young offenders has created a bad image for Broome youth as a whole. Indeed, groups of young people gathered in a public space is perceived by some survey respondents as being negative or threatening

DELIVERABLES	TIMEFRAME			
	21/22	22/23	23/24	24/25
Partner with agencies such as WA Police; and Departments of Communities, Justice and Education, to deliver effective youth diversionary activities and initiatives to address rates of youth offending.	●	●	●	●
Advocate for increased grant funding and continue to consider Shire funding to support local service providers such as Kullarri Patrol and Broome Youth and Families Hub to extend safety patrol services for children, youth and adults.	●	●	●	●
Advocate for external funding to ensure the ongoing delivery of diversionary activities and facilities to keep youth on country.	●	●	●	●
Advocate for the delivery of alternative education programs and initiatives.	●	●	●	●
Advocate for the provision of crisis accommodation for young people, including a safe place for at risk youth at night.	●	●	●	●

ACTION / / Burglary / theft / stealing

Theft and burglary are a major concern for Broome residents with reported cases of stealing and property damage statistics on the rise in the last reporting period. The use of social media to highlight the issue is leading to increased community angst.

DELIVERABLES	TIMEFRAME			
	21/22	22/23	23/24	24/25
Advocate for external funding for a home security subsidy scheme.	●	●	●	●
Provide a community awareness campaign to promote safety and crime prevention, including promotion of existing initiatives such as Neighbourhood Watch, State CCTV Register and Bikelinc.	●	●	●	●
Advocate for external funding for crime prevention resources such as scooter locks and property markers.	●	●	●	●

ACTION / / Family and domestic violence

Family and domestic violence is a major health and welfare issue in Australia - occurring across all demographics . The impacts of family and domestic violence can be serious and long - lasting. Crime statistics in Broome indicate over 800 reported assaults in 2019-20.

DELIVERABLES	TIMEFRAME			
	21/22	22/23	23/24	24/25
Advocate for the delivery of ongoing strategies by the State Government to reduce family and domestic violence.	●	●	●	●
Advocate for services addressing domestic violence occurring within the Shire of Broome.	●	●	●	●

ACTION / / Civic leadership

The Shire has an opportunity to continue to demonstrate civic leadership in advocating for State or Federal Government support where appropriate. Further opportunities exist in leveraging the collective strength of the four Kimberley local governments through the Kimberley Zone – which has proven effective previously when dealing with matters impacting the region.

DELIVERABLES	TIMEFRAME			
	21/22	22/23	23/24	24/25
Advocate for the State Government to review the effectiveness of community safety service provision within the Kimberley region to evaluate and improve social outcomes for Broome and the region.	●	●		
Advocate for the funding and delivery of an urban renewal project across major precincts in Broome.	●	●	●	●
Fund programs addressing community safety and crime prevention through the Community Sponsorship Program.	●	●	●	●
Advocate on new and emerging community safety and crime prevention issues.	●	●	●	●
Facilitate a Community Safety Working Group with regular information sessions to provide updates and seek feedback on Shire community safety initiatives; and identify opportunities and trends in the community.	●	●	●	●

