

April 23, 2025

For immediate release

## **Changes to dog off-leash areas to enhance safety in Broome's public spaces**



The Shire of Broome will be introducing changes to dog off-leash areas as part of its commitment to creating safer, more accessible public spaces for residents, visitors, and their dogs.

These changes define designated on-leash and off-leash areas across the Shire, ensuring that all community members can enjoy parks and open spaces responsibly and safely.

After significant community consultation was undertaken in 2024, the Shire of Broome received feedback from over 1,000 respondents.

The Shire's updated Animal Management Plan reflects the changing needs of a growing community and outlines a range of changes aimed at facilitating responsible animal management across the Shire, including the upcoming changes to dog exercise areas.

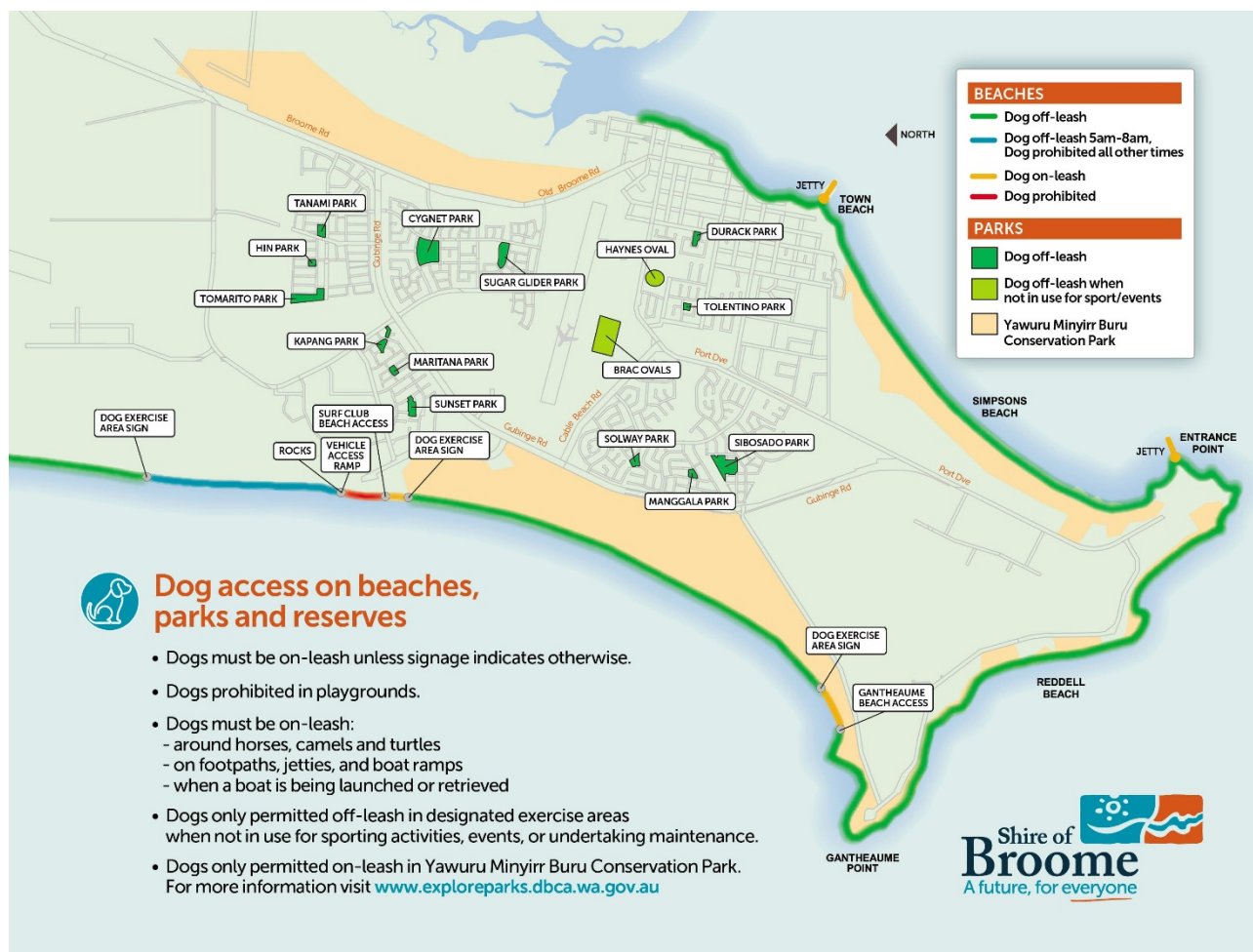
Shire President Chris Mitchell emphasised the importance of the changes in maintaining a safe and harmonious environment for everyone.

"The Shire's Animal Management Plan is about making sure that anyone who owns a pet or animal within the Shire's boundaries, does so responsibly. We're looking to our community to undertake

things like registration, microchipping and de-sexing, and to make sure their pets are healthy, kept securely when at home, and that their waste is disposed of appropriately,” he said.

“The upcoming changes to dog exercise areas reflect our commitment to balancing the needs of pet owners and the broader community. By keeping an eye out for signage and doing the right thing, we can ensure that our public spaces remain enjoyable and safe for everyone.”

“There will still be large areas of beach permitted for use as dog exercise areas, and we will be trialling the installation of 13 new off-lead dog exercise areas in parks across town. This means, when it comes to exercise for people and their pets, our community will have more choice than ever.”



The changes to dog exercise areas mean that dogs will need to be kept on a leash in public spaces unless signage clearly indicates the area is off-leash. On-leash areas are designed to ensure safety for all users, including children, cyclists, and other animals, such as horses and camels. Off-leash areas will continue to provide a safe space for dogs to exercise and socialise freely under owner supervision.

Specifically from the start of May 2025, the Shire will be increasing the dog on-leash area south of the Surf Club Ramp, designating BRAC playing fields as off-leash areas outside of organised sports or events, permanently extending the dog-prohibited zone at Cable Beach, prohibiting off-leash dogs from the vehicle accessible area of Gantheaume Beach, and enforcing dogs to be on leash near horses, camels, turtles, footpaths, jetties and where boats are being launched or retrieved.

Residents are encouraged to look for clear signage in parks and public spaces indicating whether an area is on-leash or off-leash. It is required that all pet owners carry a leash when walking their dog, even in off-leash areas, to maintain control if necessary. Residents are also asked to be mindful of other users in shared spaces and clean up after their pets.

For more information about the changes to dog exercise areas and a map of designated on-leash and off-leash areas, visit the Shire of Broome's website at **[www.broome.wa.gov.au/rangerservices](http://www.broome.wa.gov.au/rangerservices)** or contact Ranger Services on **(08) 9191 3456**.

**ENDS**

**MEDIA CONTACT:**

**Taylah Pomery, Marketing and Communications Coordinator**

Taylah.pomery@broome.wa.gov.au | 08 9191 3442 | 0408 599 134