

What's Happening in the Shire of Broome?

Marina Prior at Civic

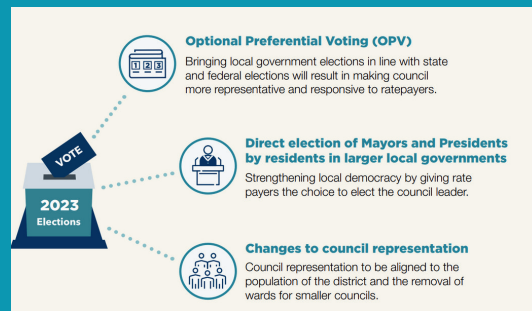


Soprano and Tenor powerhouse legends of Musical Theatre and Opera, Marina Prior and David Hobson embark on their Encore Tour, 'The 2 Of Us' in up close and personal mode.

Saturday, October 14 at 7.30pm

Tickets: broomeciviccentre.com.au

Early Council voting opens



Early voting for the 2023 Shire Council Election is now open between 9am and 4pm weekdays until October 20 at the Shire Admin Building at 27 Weld Street. Or you can vote on Election Day on Saturday, October 21.

For more info, including candidate profiles, visit broome.wa.gov.au/election2023

Cable Beach ramp closures



Turtle nesting season means that from October 1, the vehicle access ramp at Cable Beach will close from 8pm-6am daily and for two hours either side of high tides of 9m or more. A total closure ramp will be in place from December 1 to and including January 31, or when beach conditions allow for vehicles to safely cross the rocks.

Shire receives \$7.6m boost for key-worker housing village



One of the Shire of Broome's highest priority projects is a step closer to fruition after the State Government announced it was providing \$7.6 million for 91 key worker homes. The funding will allow the Shire to undertake headworks and some civil works for the Sanctuary Road Caravan Park, Key Worker and Over 55s Village at Lot 3110 Sanctuary Road.

The project will feature 91 park homes intended as affordable housing for key workers, which are in critical short supply.

The headworks, which include clearing and installing services such as power, water, and sewerage, will prepare the site for a developer to construct caravan park sites and key-worker accommodation.

Broome Shire President Desiree Male said she felt both delighted and relieved when Minister for Planning; Lands; Housing and Homelessness, John Carey announced the funding as part of a \$12 million infrastructure boost around the state.

"It is good to know that Broome's housing crisis has become a state government priority," she said.

"The funding is a testament to the Shire's persistence in advocating for more housing in Broome, and I can't tell

you how many meetings there have been with various ministers to get to this point. A lack of housing has long been identified as an issue in Broome, and our 2022 Community Scorecard process told us it was the number one issue that residents want the Shire to fix.

"There is a limited role the Shire can play in constructing homes, but we responded with a Business Case for the Sanctuary Road Caravan Park, Key Worker and Over 55s Village project, which will have a massive impact on Broome."

Cr Male said while the \$7.6 million isn't as much as the Shire requested for the project, it will go a long way in helping the Shire get this essential project off the ground.

"Because it is a bare green fields site, it will require site preparation, connections and roadworks to make it shovel-ready to construct key worker accommodation and caravan sites."

Each of the 91 housing plots will feature modern, high-quality, two- and three-bedroom relocatable housing. The site north of Sanctuary Road is on crown land over which the Shire holds a Management Order.

Cr Male said the Shire will lease the improved land to a private developer, who will construct the project.

Shire seeks conditions on KMS road trains

The Shire of Broome has called on Main Roads WA to impose several conditions on the Kimberley Mineral Sands (KMS) proposal to use 60-metre road trains to transport produce from the Thunderbird mine site to Broome Port. Shire of Broome CEO Sam Mastrolemba has written to Main Roads WA (MRWA) to express community concerns about the proposal and seek a commitment that they are considered during the approval process for using the Performance Based Solution (PBS) Quad Road Trains. The proposed conditions include scheduling Kimberley Mineral Sands truck movements to avoid busy periods such as school drop off and pick up hours and events and for KMS to implement a complaints management system approved by the Shire and MRWA before vehicle movements to Broome Port commence.

The Shire had received significant representation from the Broome community regarding the KMS proposal. Public submissions included meetings with elected members and Shire officers and questions submitted to the Council at Ordinary and Annual Electors meetings. Shire president Cr Desiree Male said while the Shire has no authority over any of the roads used in the proposal,

and there is no legislative or policy requirement for Council to consider this proposal, Shire officers prepared an agenda item on the matter for the August 31, 2023 Ordinary Meeting of Council.

The agenda item included recommendations based on assessing the results of the community engagement undertaken by KMS as required by MRWA and various technical reports commissioned by both organisations. However, due to several elected members declaring a conflict of interest, this item did not achieve a quorum and could not be considered by the Council.

"To honour Council's commitment made to the community, and after receiving advice that a Council resolution is not required, the Shire has now formally provided written advice to Main Roads, KMS and Kimberley Ports Authority on the range of issues identified in the reports and by the community," said Cr Male.

"This advice includes three conditions directly related to the KMS proposal, 13 recommendations related to the road network more generally, and a formal request to KMS to undertake a traffic impact statement for ship loading activities at the port."